

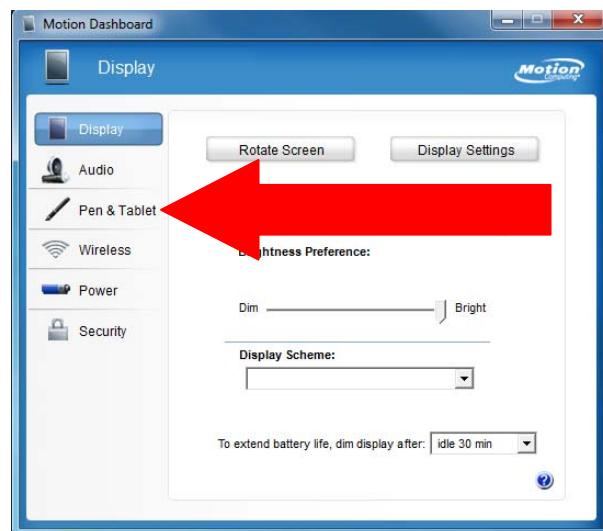
SET CAMERA BUTTON TO WORK WITH SIMON

This should make the tablet's camera button work with SIMON. If you want the camera to work outside of SIMON, you have to put these settings back to their defaults.

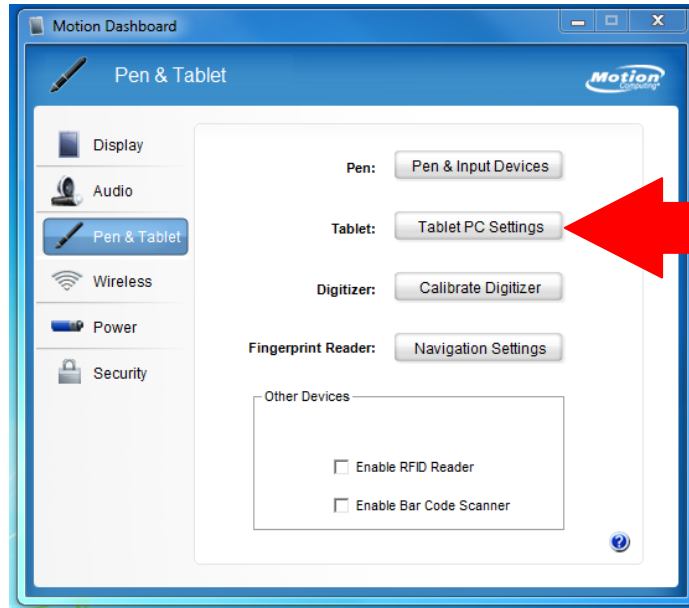
1. On the Desktop, Double Click on the Motion Dashboard



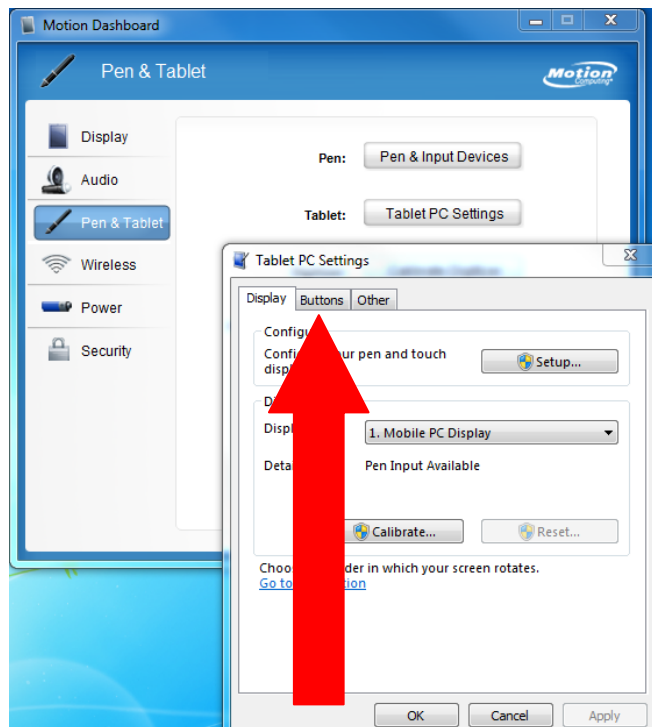
2. On that Window, click on the Pen & Tablet button on the left side of the window



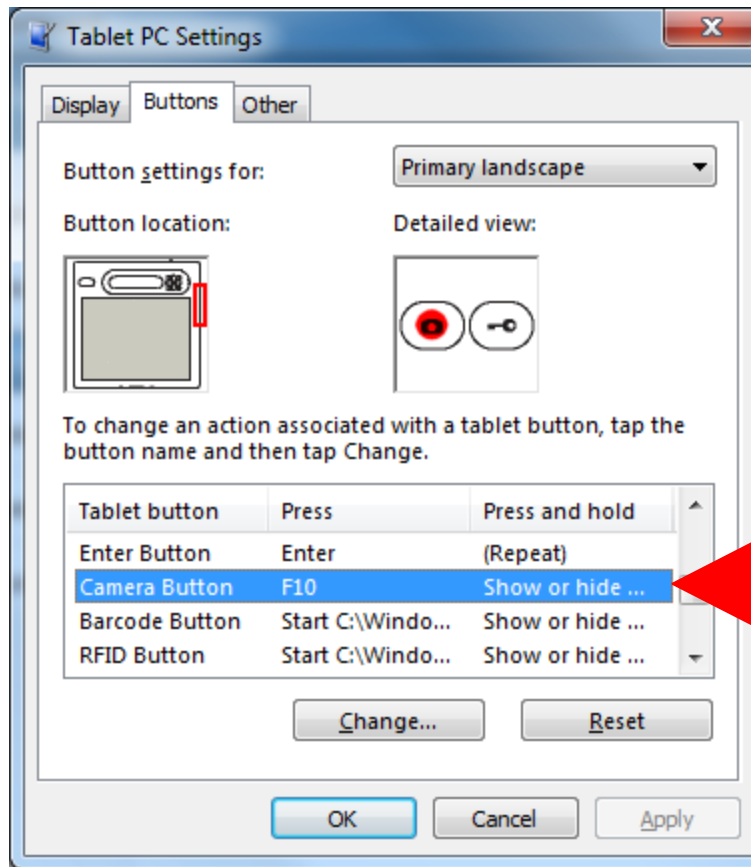
3. Click on the Tablet PC Settings button



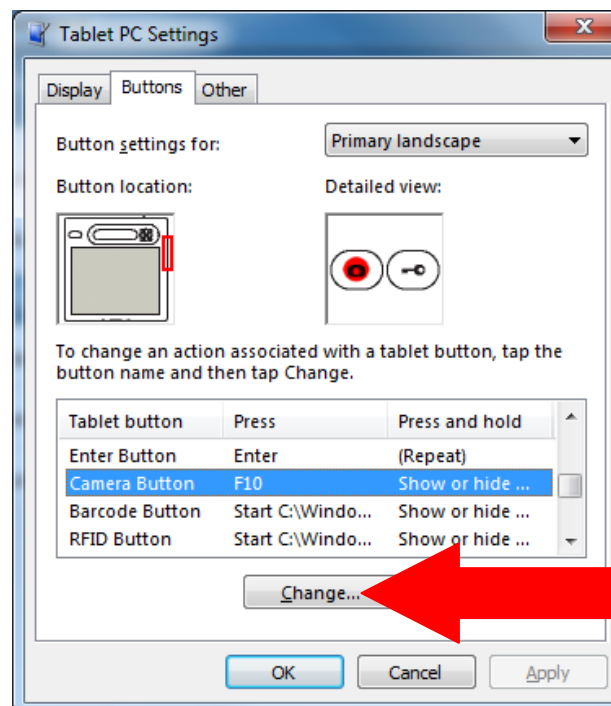
4. Click on the Buttons tab in the top, left corner of the window



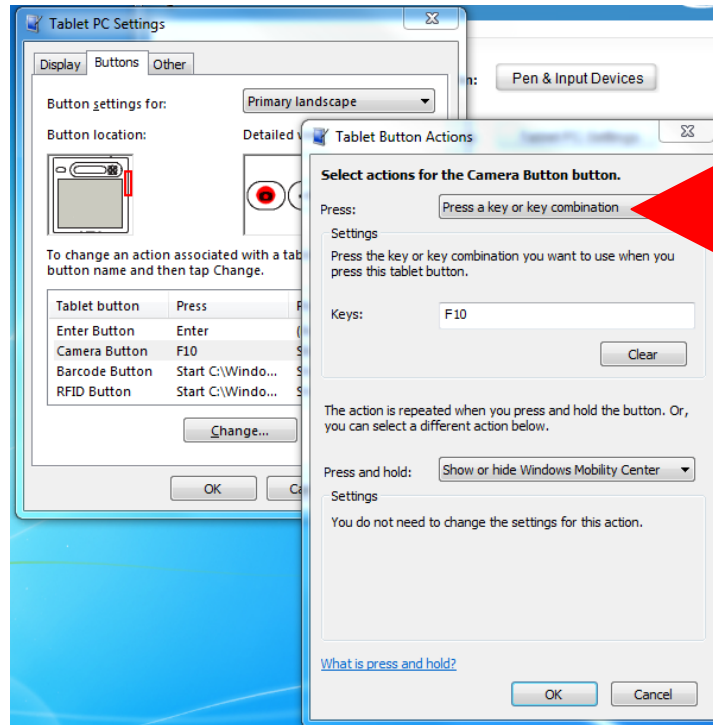
5. Scroll down in the window until 'Camera Button' is displayed in the Tablet Button column



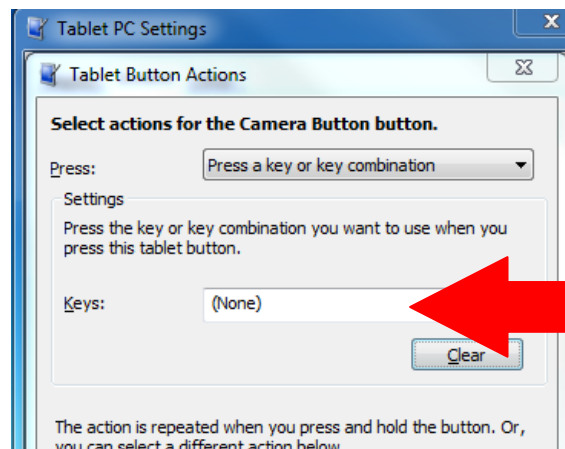
6. Click the 'Change' button



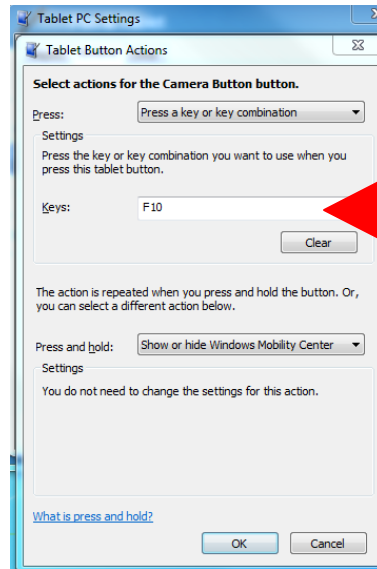
7. In the top field, click the Down Arrow and choose "Press a key or key combination"



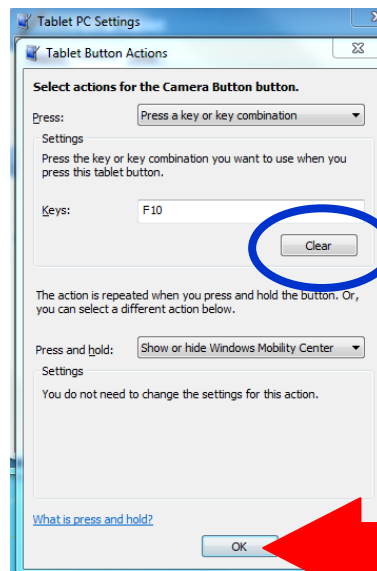
8. In the Keys field, click in the field to bring up the tablet keyboard



- Click the “Fn” button in the lower right of the keyboard and then click the “F10” button on the top row of the tablet keyboard (if you do this while docked and using a mouse and external keyboard just press “F10”). The end result of your action should look like this.



- Click OK and OK to get back to the Motion Dashboard screen.



To reset button for use of camera outside of SIMON – click here.

- To reset the camera button to use the camera independent of SIMON, navigate back to this panel and click the “Clear” button shown above with a circle around it.