

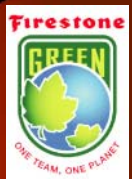
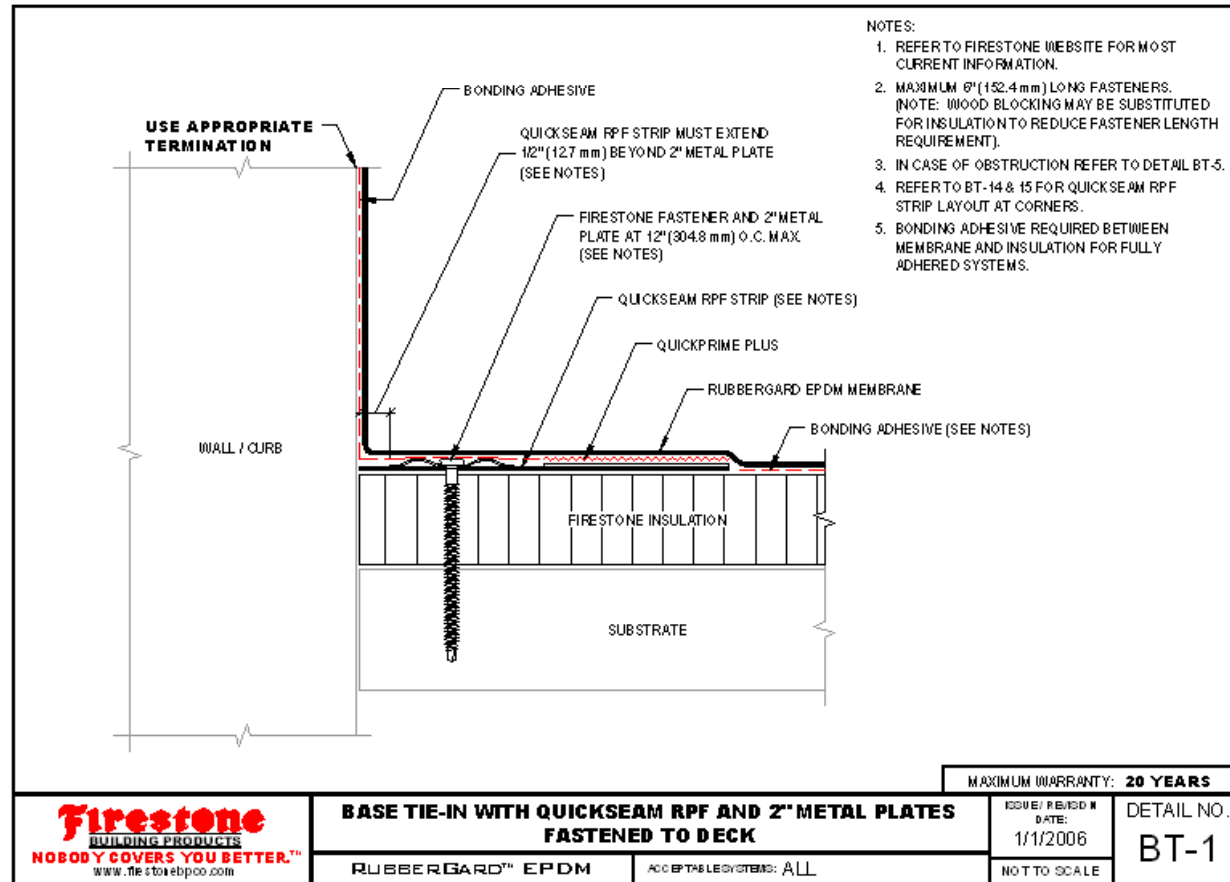
Firestone Building Products

EPDM Training – Base Tie-in and Roof Edge

Firestone
BUILDING PRODUCTS

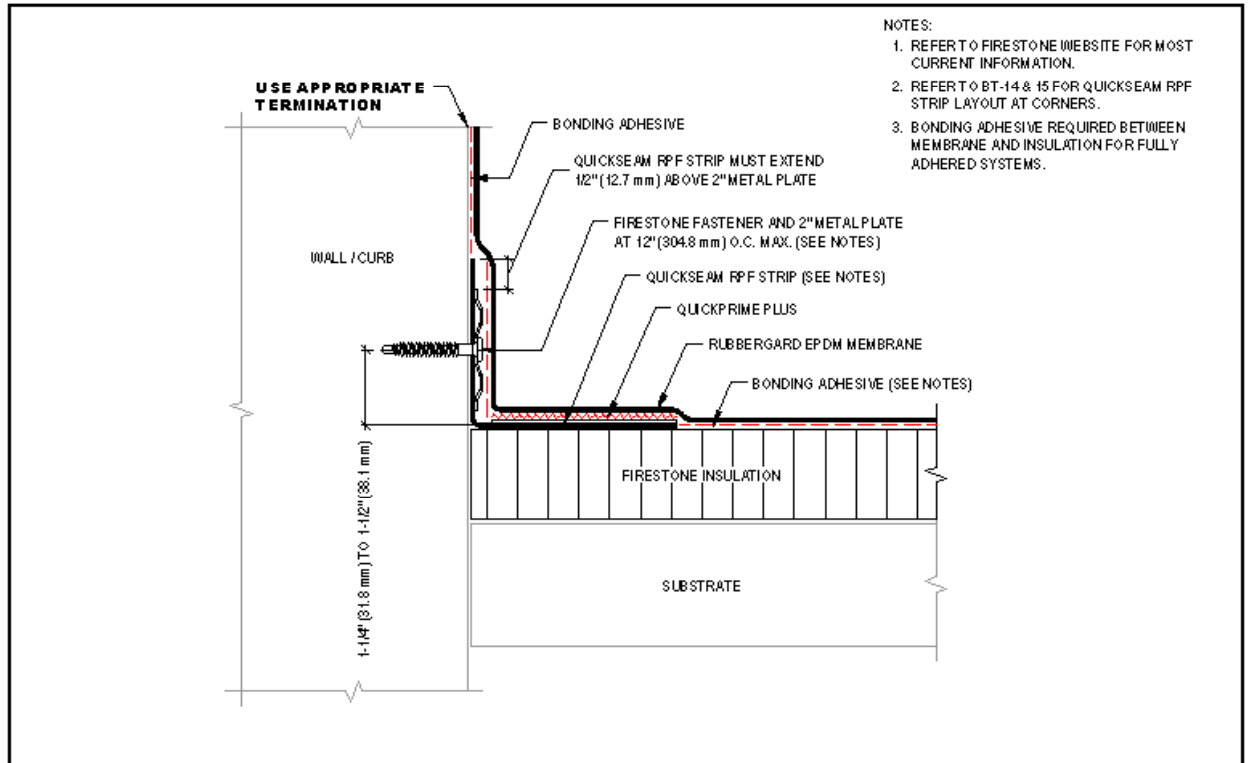


Details: Base Tie-In – RPF Strip, 2” plates to deck





Details: Base Tie-In – RPF Strip, 2” plates to wall.



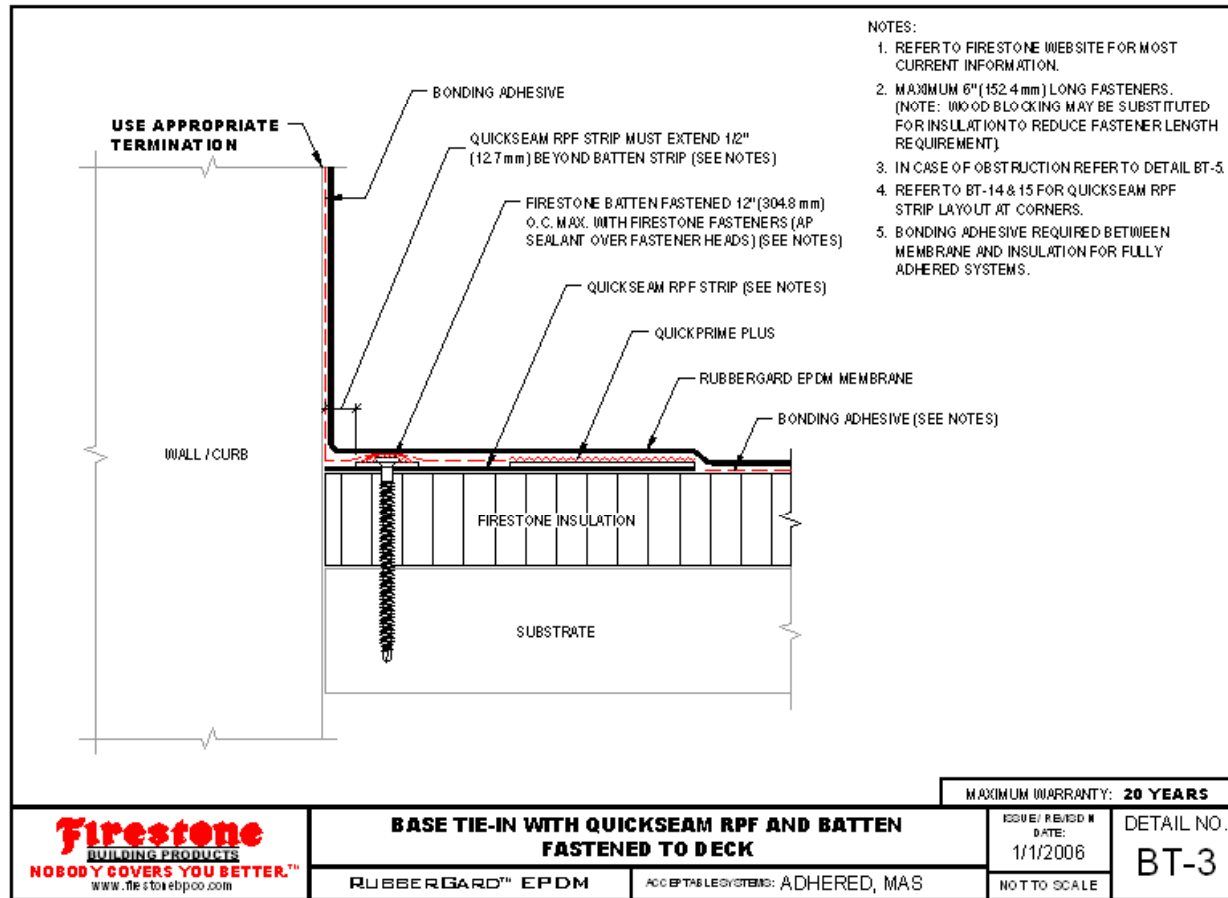
- NOTES:
1. REFER TO FIRESTONE WEBSITE FOR MOST CURRENT INFORMATION.
 2. REFER TO BT-14 & 15 FOR QUICKSEAM RPF STRIP LAYOUT AT CORNERS.
 3. BONDING ADHESIVE REQUIRED BETWEEN MEMBRANE AND INSULATION FOR FULLY ADHERED SYSTEMS.

 Firestone BUILDING PRODUCTS NOBODY COVERS YOU BETTER. [™] www.firestonebuildingproducts.com	BASE TIE-IN WITH QUICKSEAM RPF AND 2" METAL PLATES FASTENED TO WALL / CURB	ISSUE / REVISED # DATE: 1/1/2006	DETAIL NO. BT-2
	RUBBERGARD [™] EPDM	APPLICABLE SYSTEMS: ALL	NO TYPICALS
MAXIMUM WARRANTY: 20 YEARS			



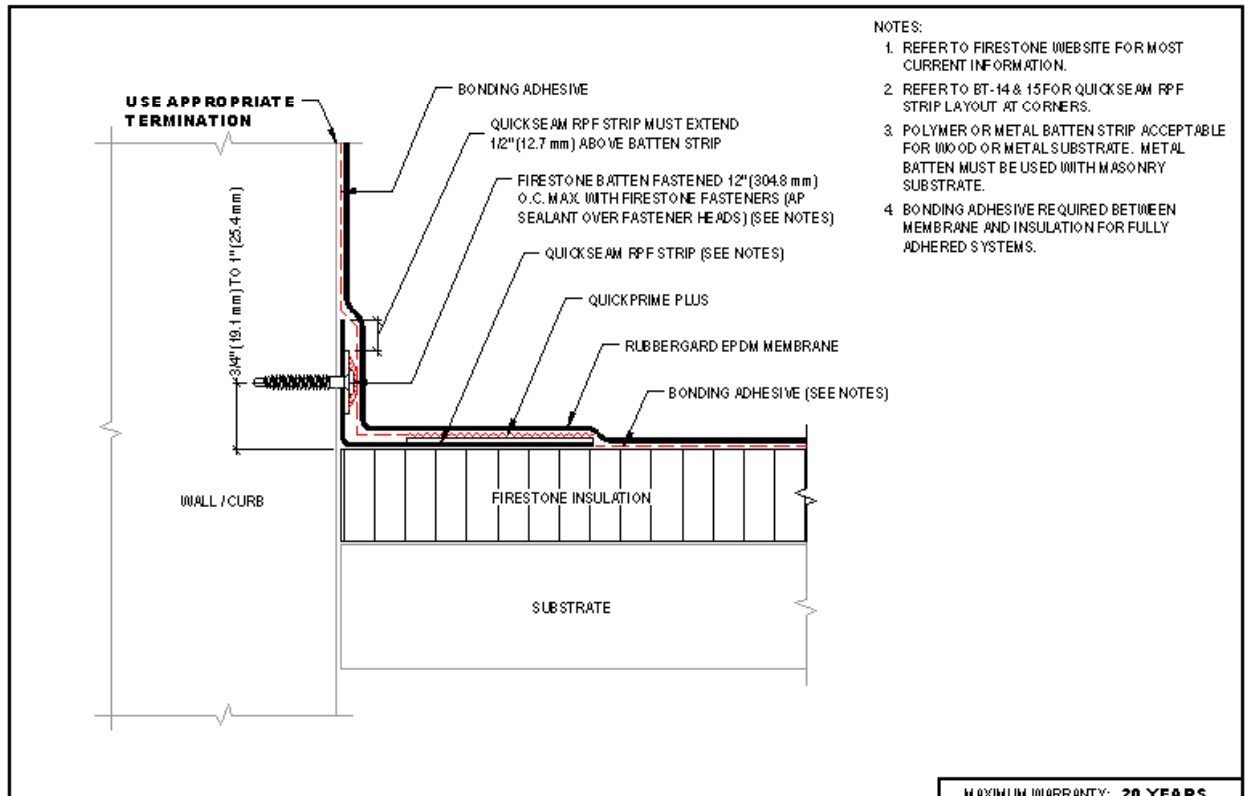


Details: Base Tie-In – RPF Strip, Batten to deck





Details: Base Tie-In – RPF Strip, Batten to wall.



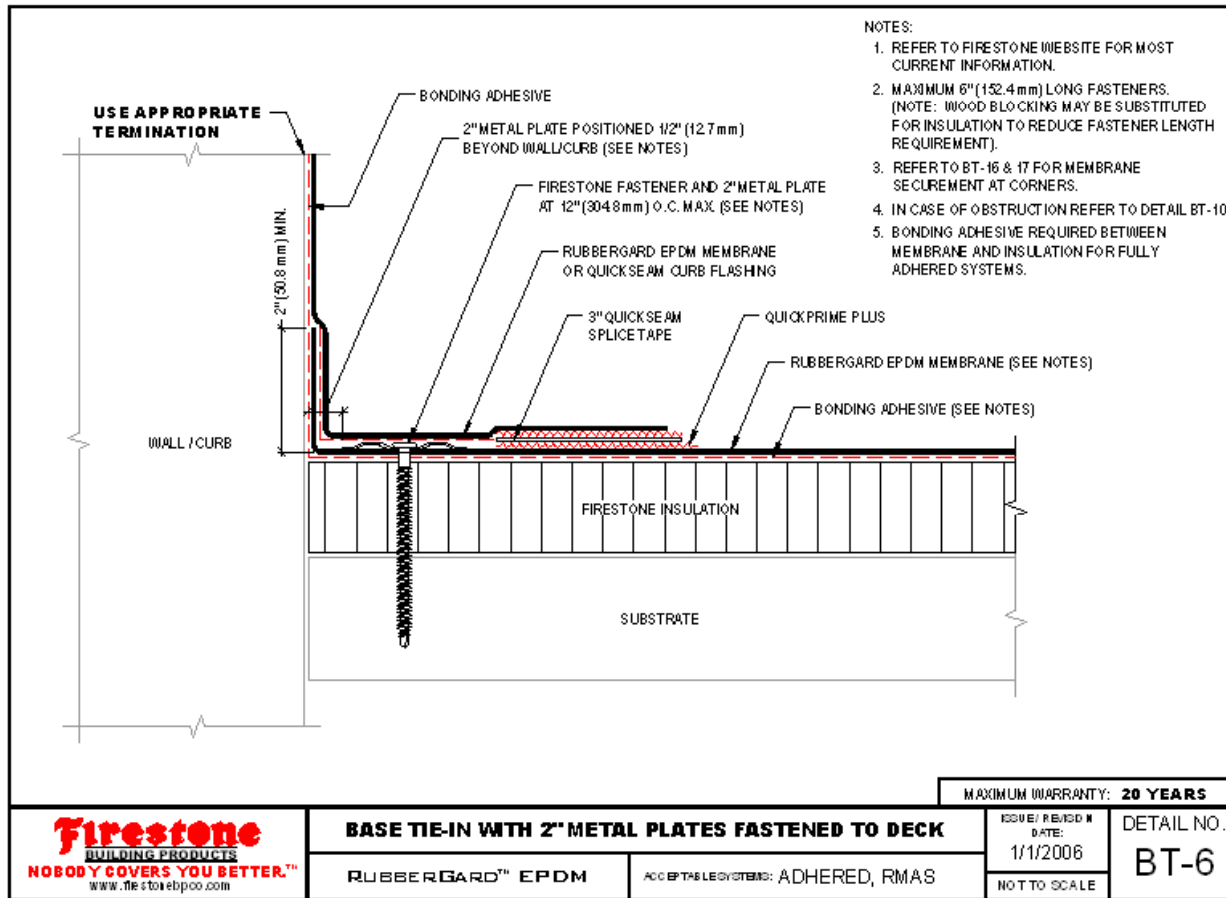
- NOTES:
1. REFER TO FIRESTONE WEBSITE FOR MOST CURRENT INFORMATION.
 2. REFER TO BT-14 & 15 FOR QUICKSEAM RPF STRIP LAYOUT AT CORNERS.
 3. POLYMER OR METAL BATTEN STRIP ACCEPTABLE FOR WOOD OR METAL SUBSTRATE. METAL BATTEN MUST BE USED WITH MASONRY SUBSTRATE.
 4. BONDING ADHESIVE REQUIRED BETWEEN MEMBRANE AND INSULATION FOR FULLY ADHERED SYSTEMS.

	BASE TIE-IN WITH QUICKSEAM RPF AND BATTEN FASTENED TO WALL / CURB		MAXIMUM WARRANTY: 20 YEARS
	RUBBERGARD™ EPDM	ACC. BY TAB LEG SYSTEMS: ALL	ISSUE / REVISED # DATE: 1/1/2006 NOT TO SCALE



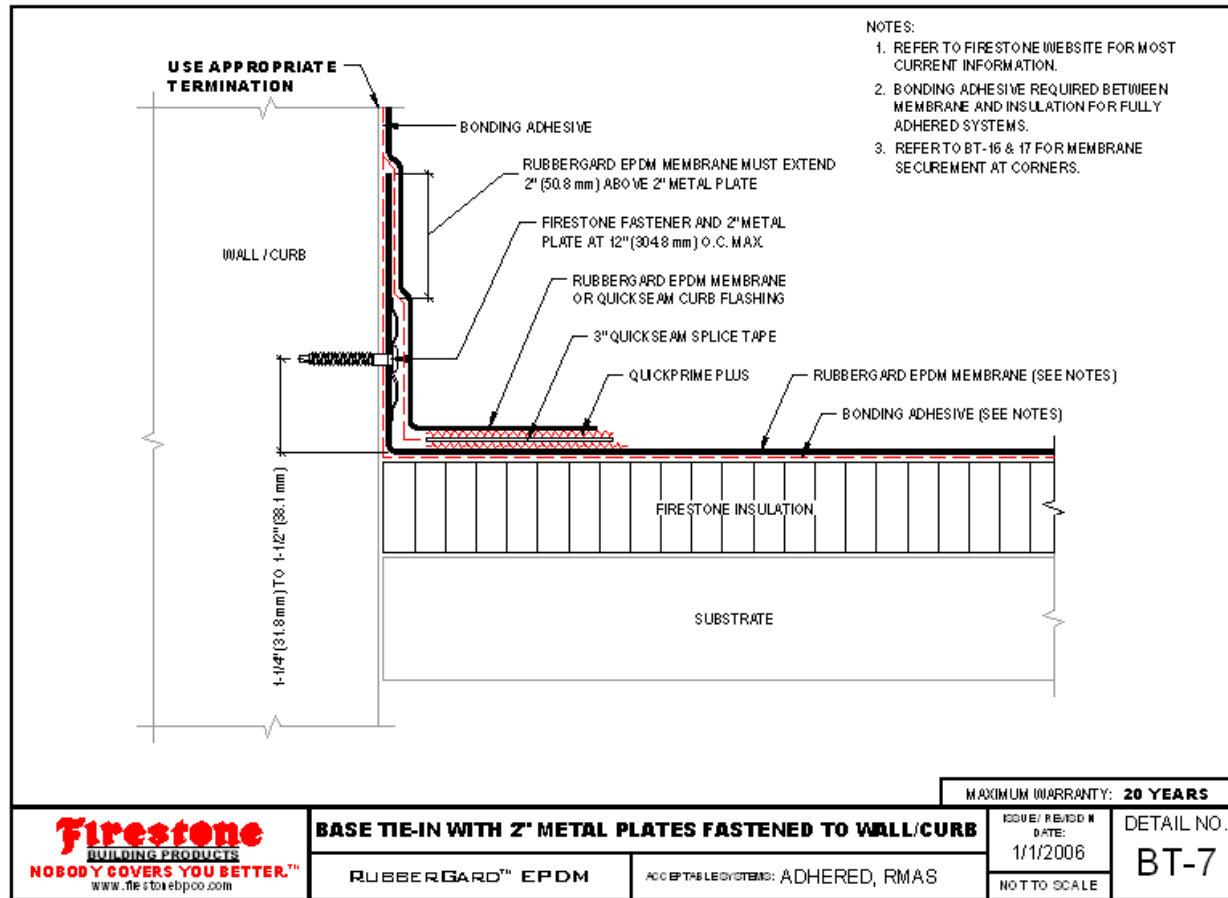


Details: Base Tie-In – 2” plates





Details: Base Tie-In – 2” plates to wall/curb





Details: Base Tie-In

Improper Application





Details: Base Tie-In

Proper Application





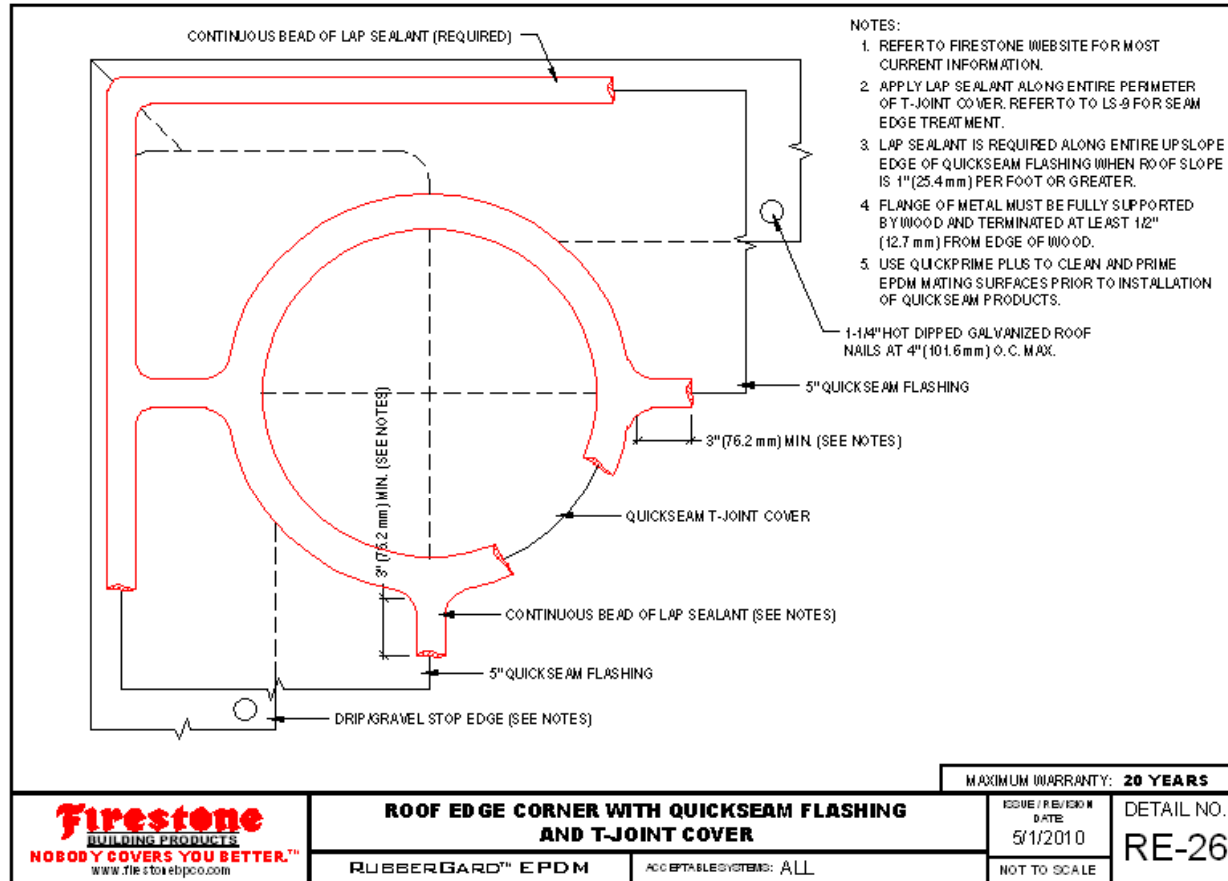
Base Tie-In Tips

- Base tie-in should have the proper fastening rate per roof design.
- Base tie-ins can be made to either the deck or into the approved adjacent vertical surface.
- Do not over-drive plates and fasteners.
- Be sure to prime all mating surfaces within the base tie-in.
- Use caution when rolling in the base tie-in areas.
- If a deck obstruction occurs, base tie-ins can be moved a maximum of 6" from the wall or parapet.



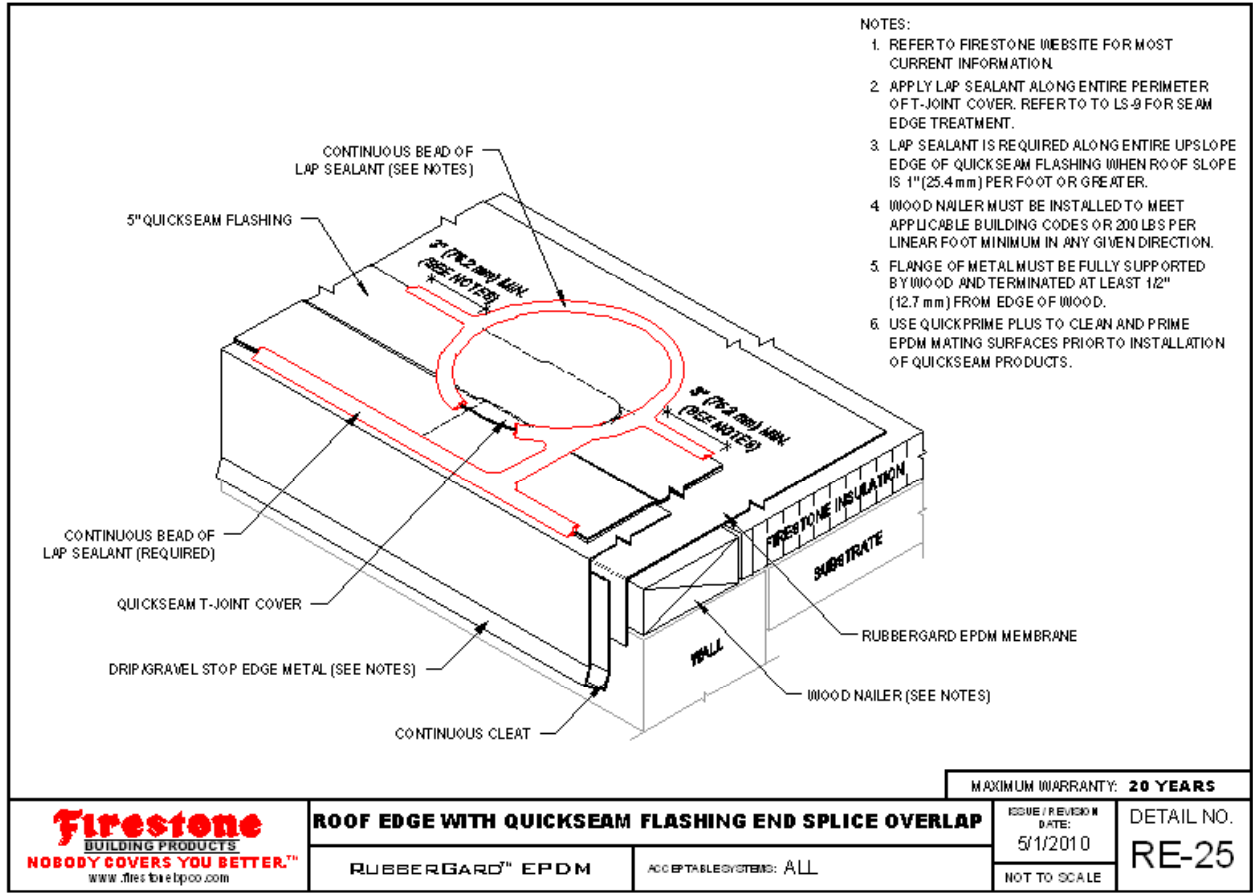


Details: Roof Edge Corner w/ T-Joint



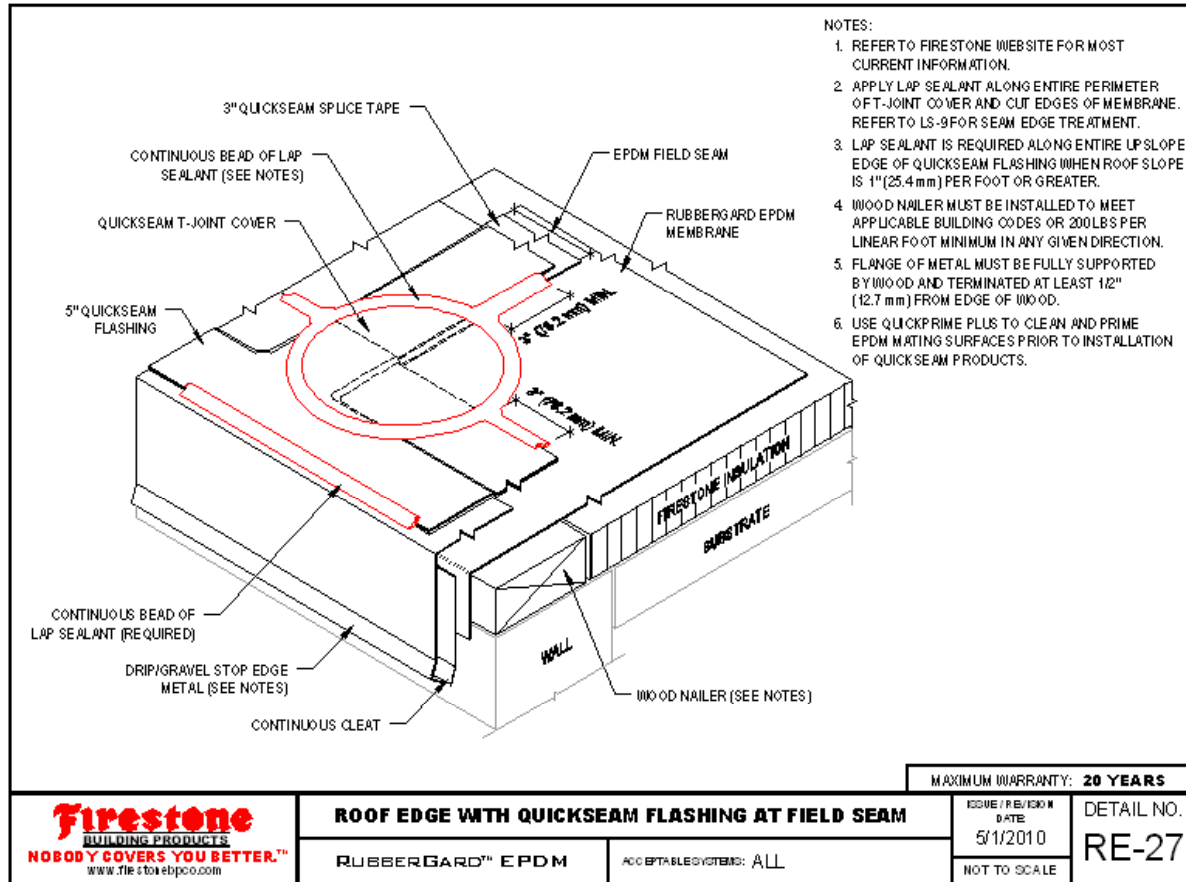


Details: Roof Edge w/ QS endlap splice overlap





Details: Roof Edge w/ Field Seam





Details: Roof Edge w/ Field Seam



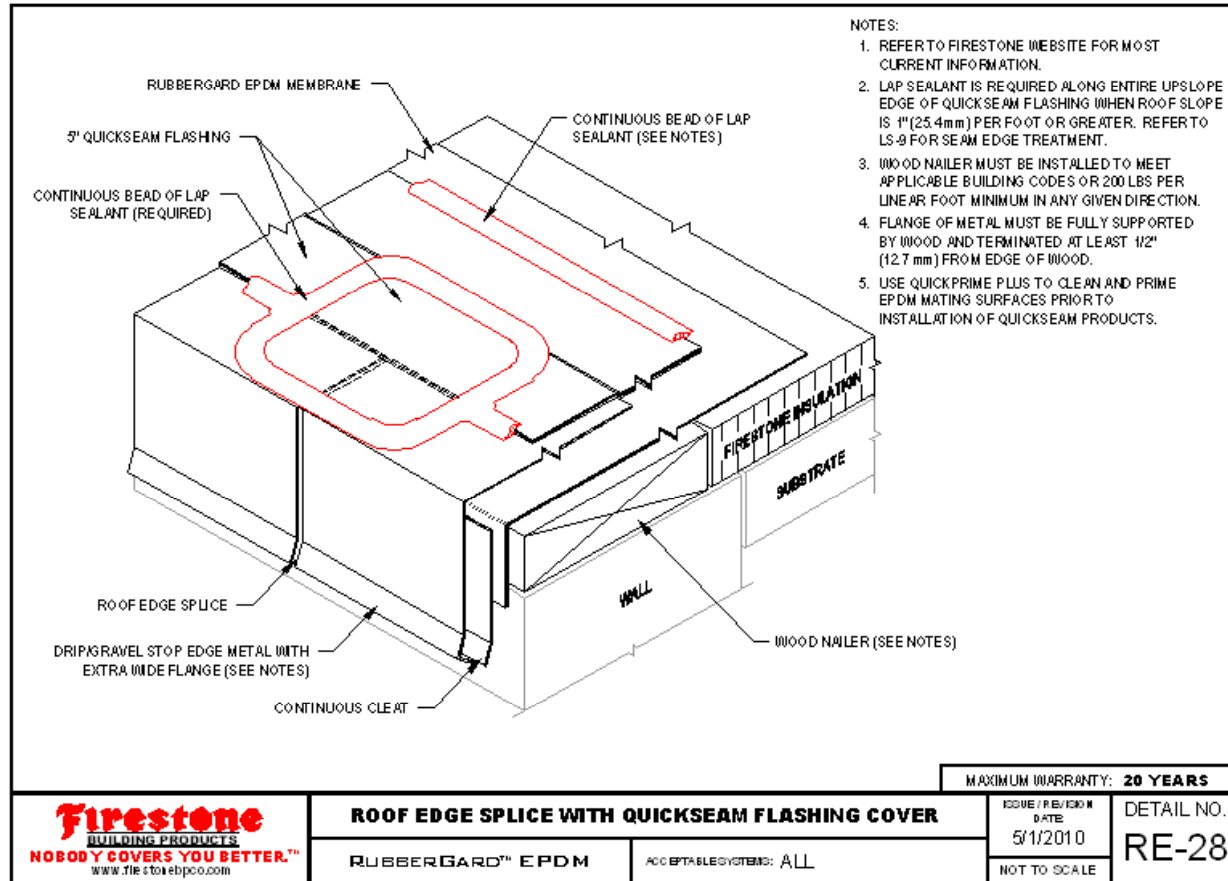


Details: Roof Edge w/ Field Seam



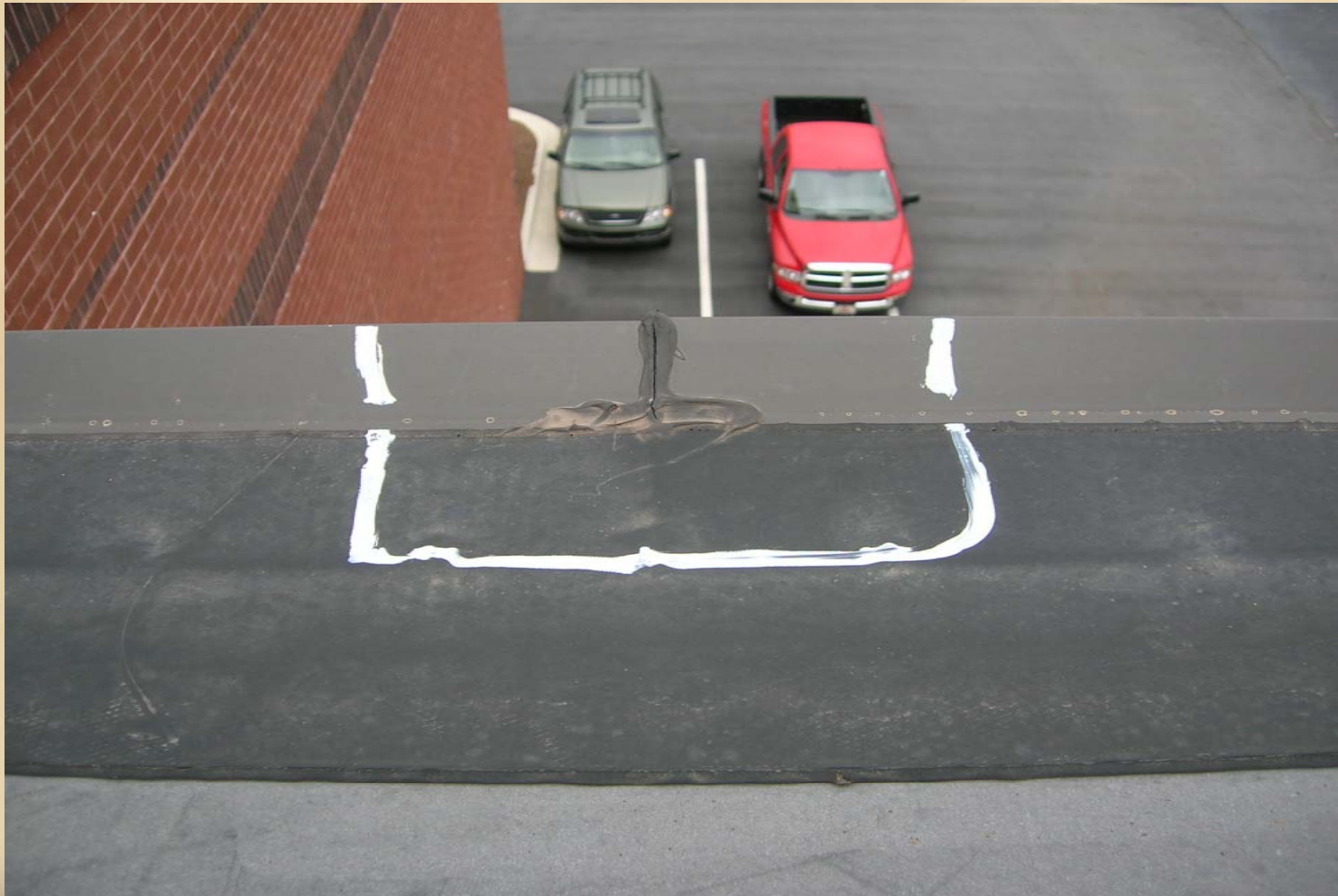


Details: Roof Edge Splice





Details: Roof Edge Metal Splice





Roof Edge Tips

- Wood nailers must be installed to meet applicable building codes or 200lbs per linear foot minimum in any given direction.
- Metal flanges must be fully supported by wood and terminated at least ½” from the edge of the wood.
- Metal flanges covering the wood nailer must be fastened every 4” o.c.
- Lap sealant is required on the entire upslop edge of the QuickSeam Flashing.
- When stripping in the edge with 5” QuickSeam Flashing be sure to center the edge metal nails underneath the flashing.

