

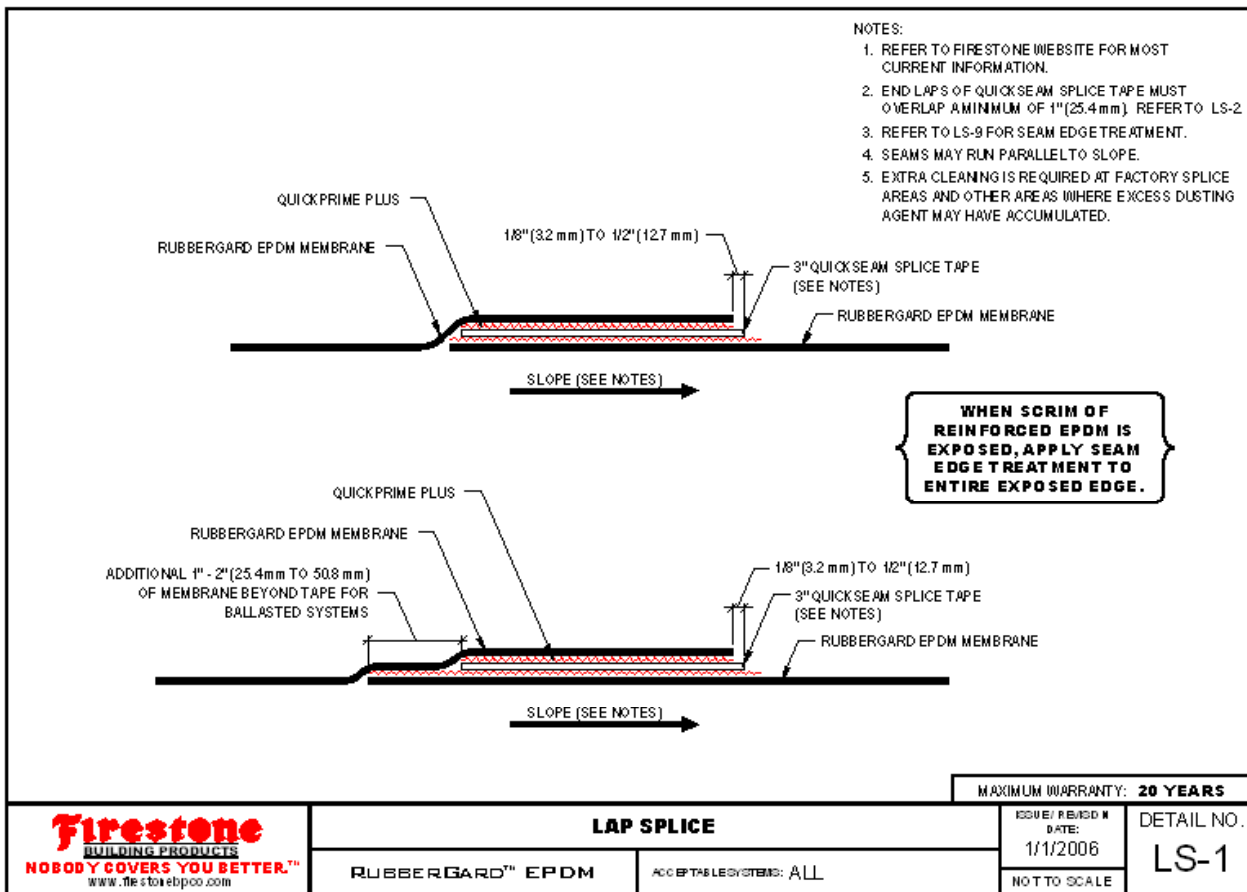
# Firestone Building Products

EPDM Training – Lap Splicing

**Firestone**  
**BUILDING PRODUCTS**



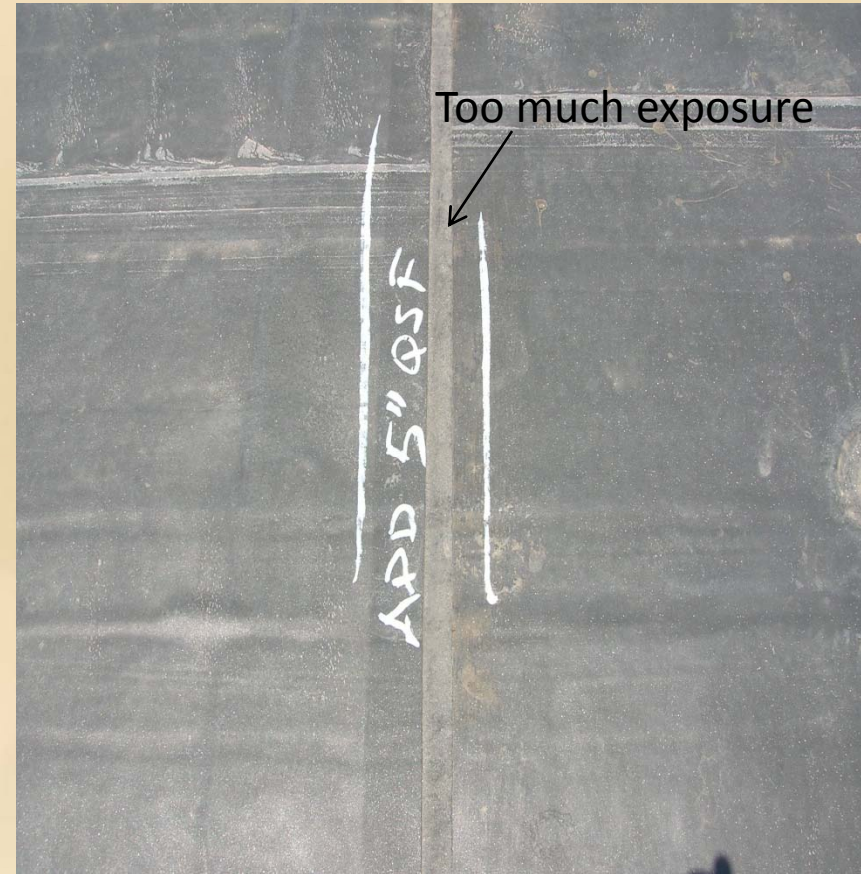
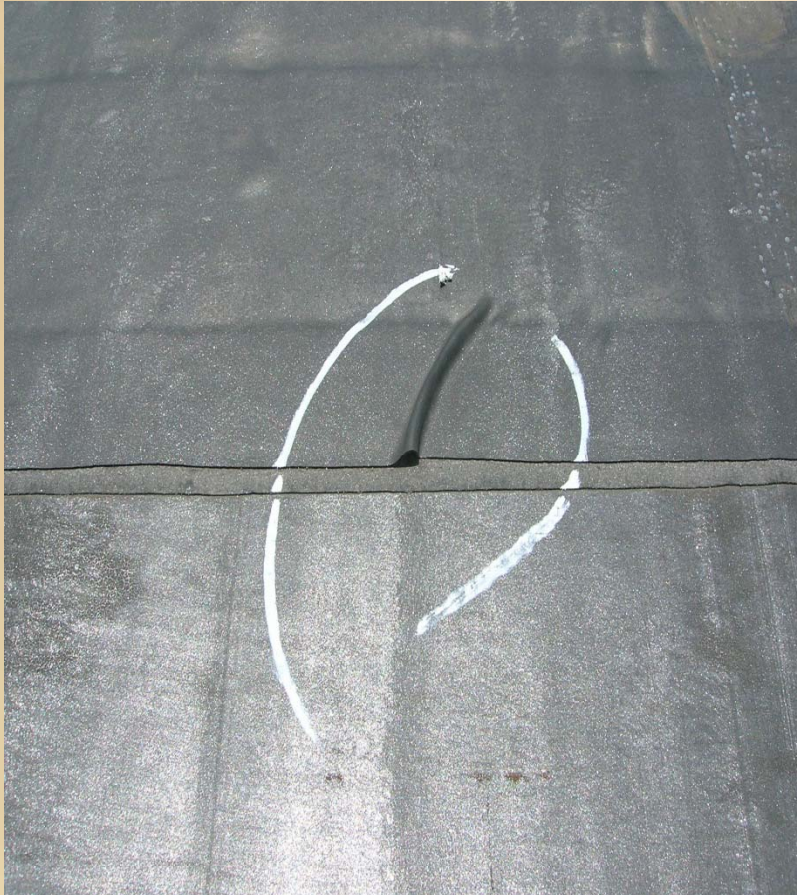
# Details: Standard Lap Splice





# Details: Lap Splice

Improper Application







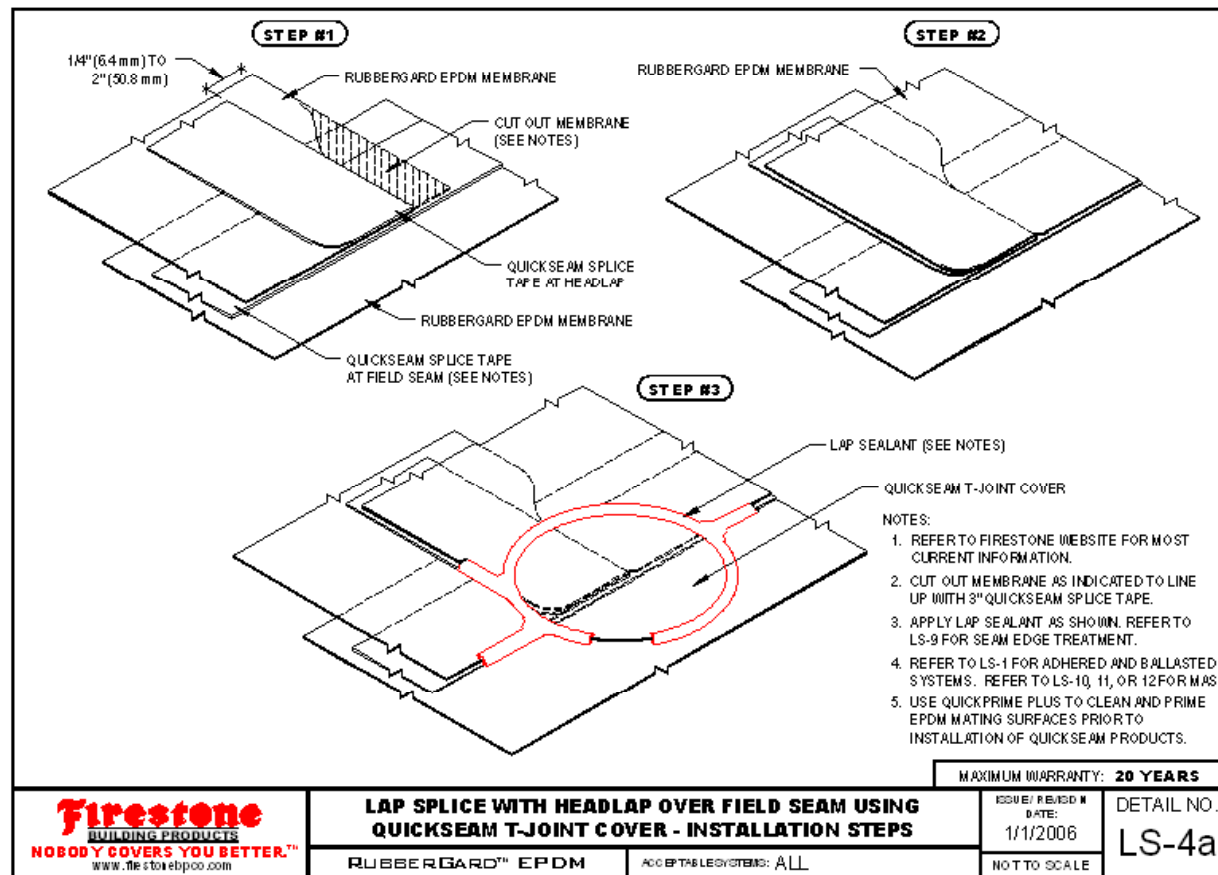
# Details: Lap Splice

Proper Application





# Details: Headlap over Field Seam







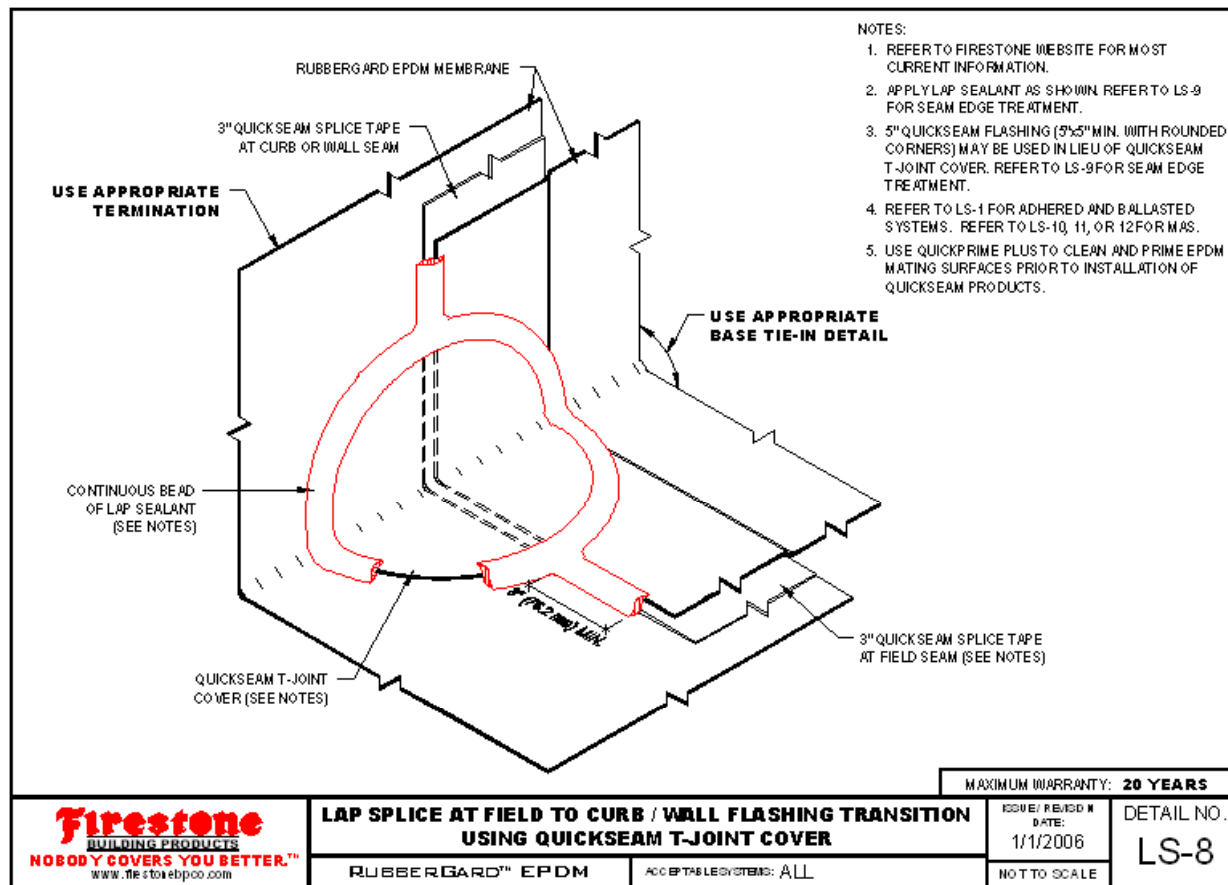
# Details: Headlap Splice

Proper T-Joint Location





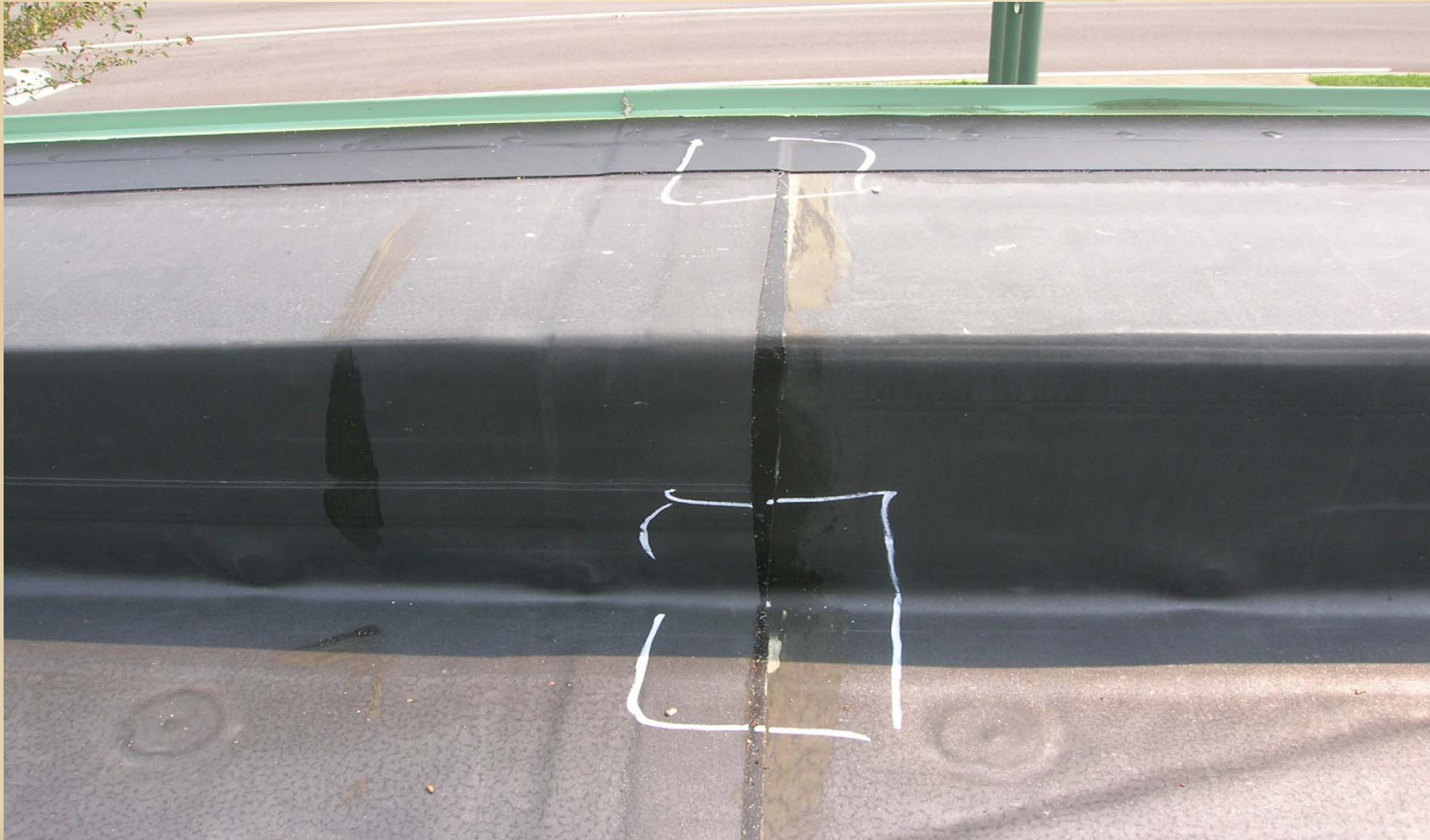
# Details: Field to Curb/Wall Lap Splice





# Details: Field to Curb/Wall Lap Splice

Improper T-Joint Application







# Details: Field to Curb/Wall Lap Splice

Proper T-Joint Application





## Lap Splicing Tips

- Correctly mark the areas to be spliced together so that there is 1/8" of Quickseam Splice Tape exposed.
- Apply primer to areas where the two field sheets will be spliced together.
- Apply Quickseam Splice Tape to the top of the bottom sheet first. Leave the release paper on and roll the seam tape onto the bottom sheet before putting the top sheet in place.
- With the release paper still in on the tape, put the top sheet in place.
- Remove the release paper at a 45° angle.
- Roll the top sheet into the tape at an angle to avoid air bubbles.

