

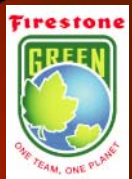
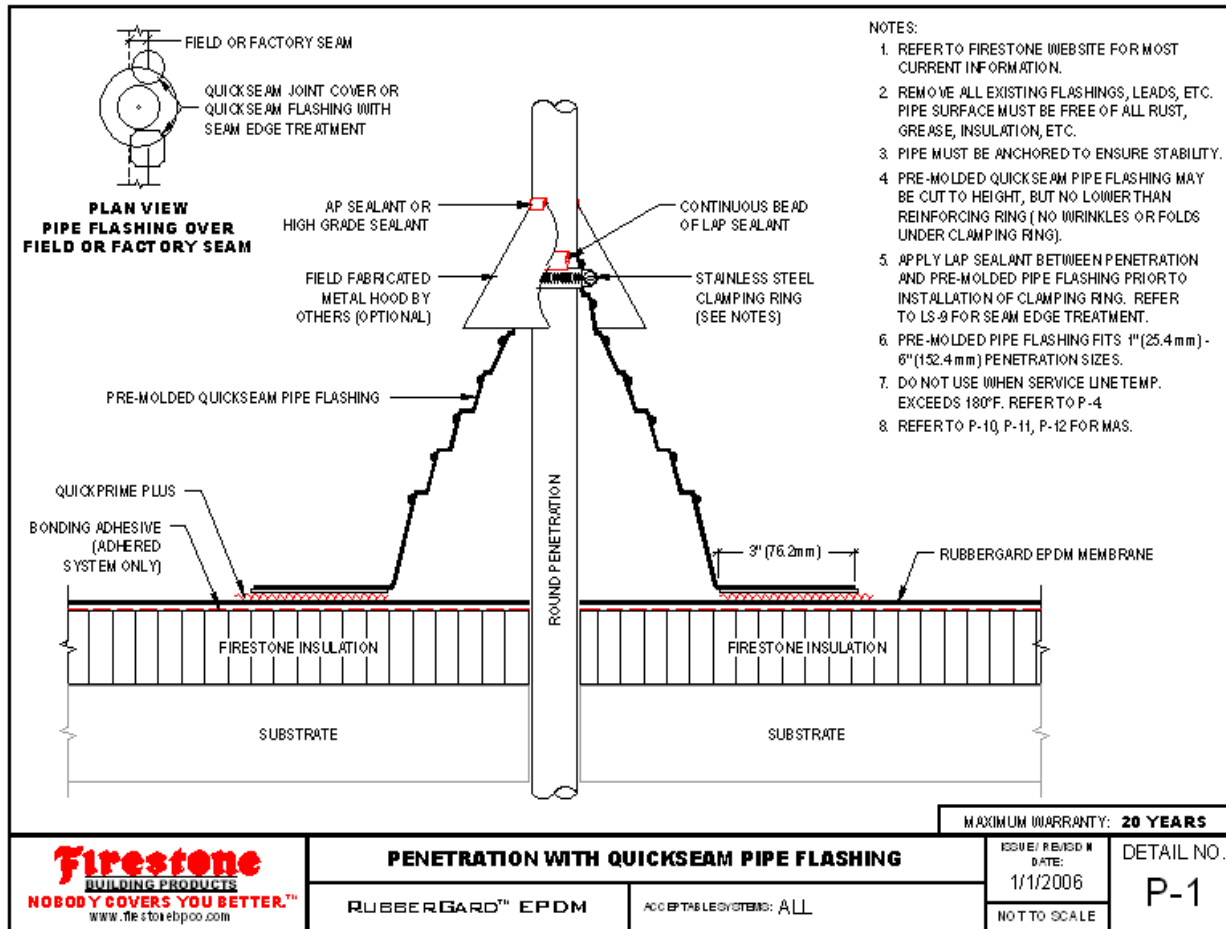
Firestone Building Products

EPDM Training - Penetrations

Firestone
BUILDING PRODUCTS



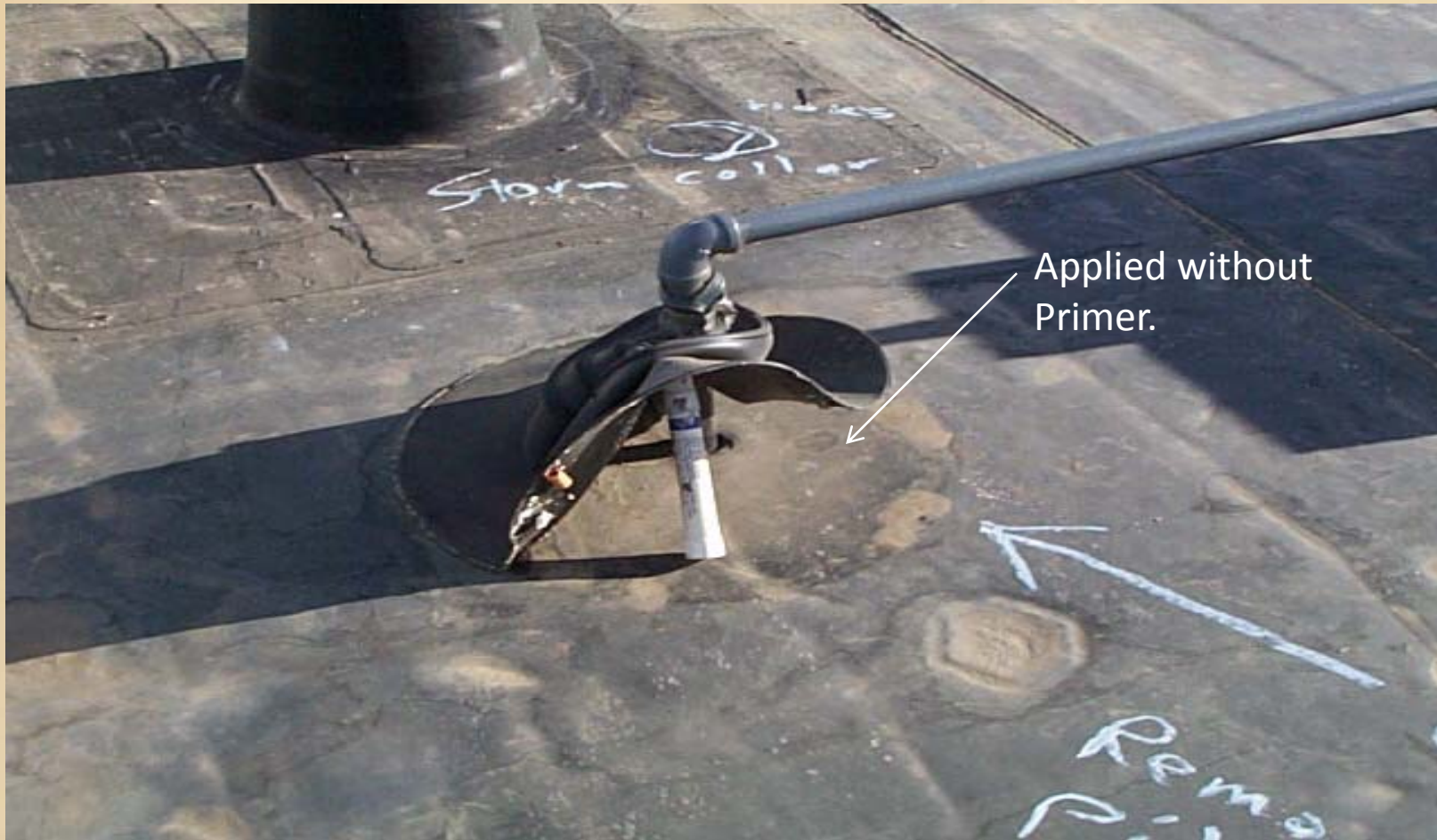
Details: Penetrations - Pipe Boot





Details: Penetrations - Pipe Boot

Improper Application





Details: Penetrations - Pipe Boot

Proper Application





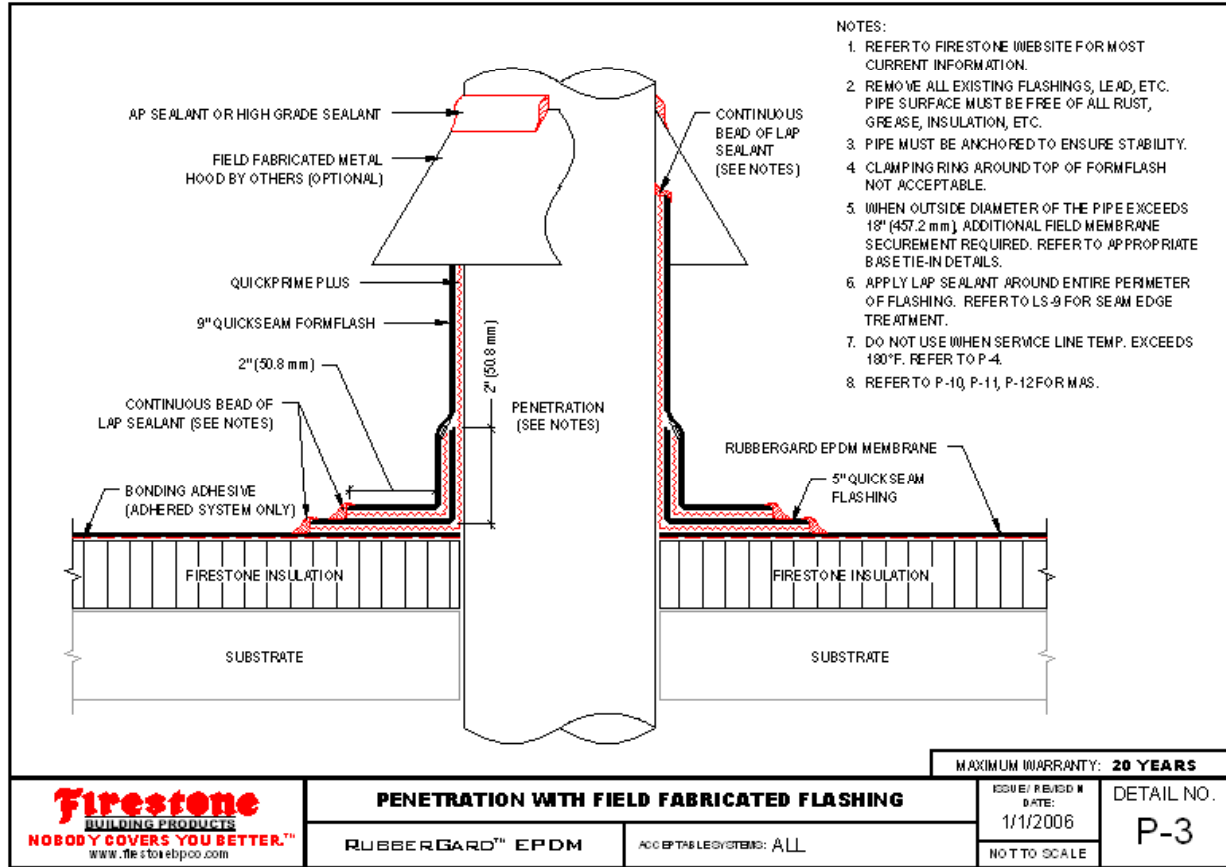
Pipe Boot Tips

- Allow primed surfaces to completely flash off before installing Firestone Quickseam Pipe Boot.
- Place pipe boot on application area and then peel away the release paper at a 45° angle.
- Roll the base of the pipe boot from the boot area out onto the deck.
- Do not over tighten the clamping ring.
- Apply Lap Sealant around to the top edge of the pipe boot.





Details: Penetrations – Field Fab Pipe





Details: Penetrations – Field Fab Pipe

Improper Application





Details: Penetrations – Field Fab Pipe

Proper Application





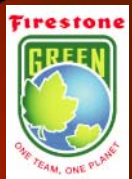
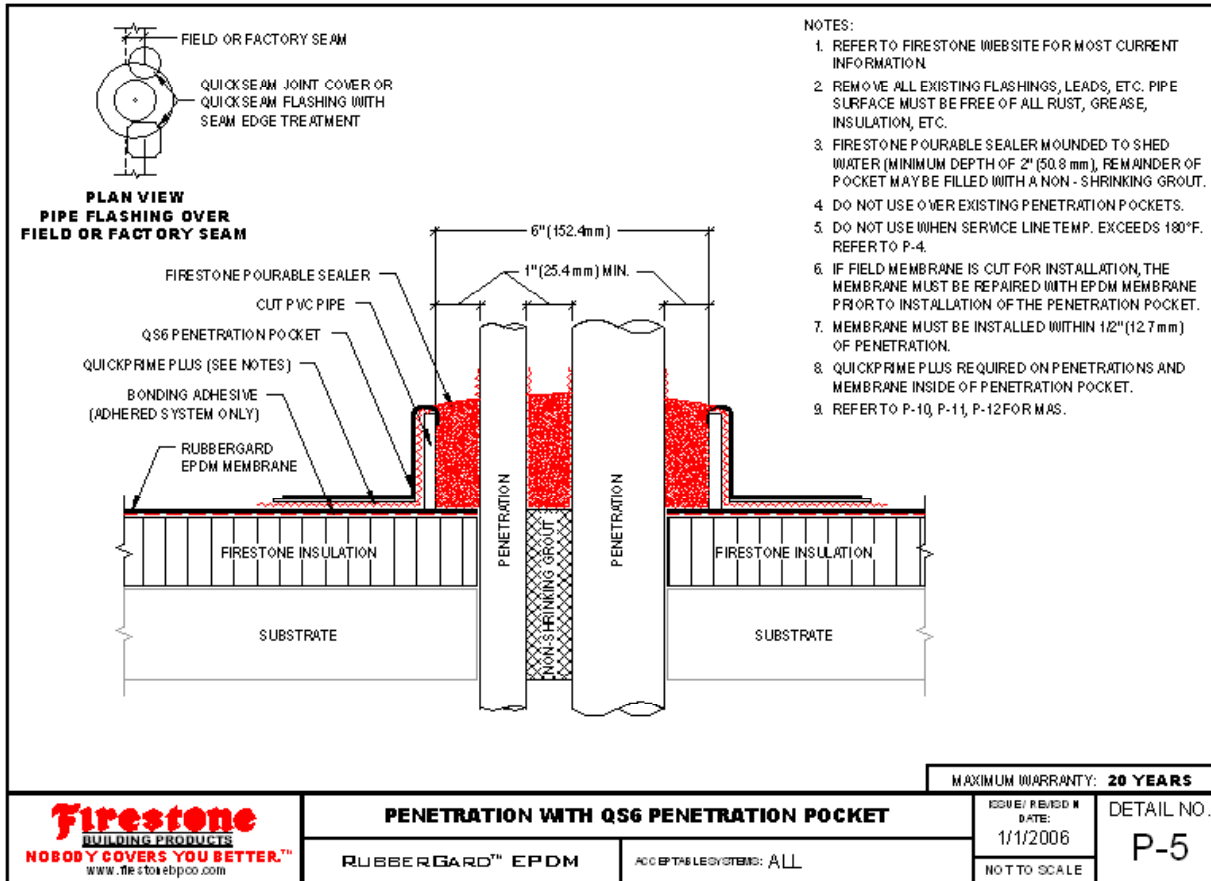
Field Fab Pipe Wrap Tips

- Be sure to prime all surfaces where Quickseam products will be applied.
- Allow primed surfaces to completely flash off before installing Firestone Quickseam Flashing.
- Apply flashing to vertical surfaces first, then work your way around the pipe.
- Do not over-stretch the flashing. Use the diamond pattern as an indicator.
- Roller apply everything from inside, outward to avoid air bubbles.
- NO clamping rings on Quickseam products!





Details: Penetrations – Penetration Pocket





Details: Penetrations – Penetration Pocket

Improper Application





Details: Penetrations – Penetration Pocket

Proper Application





Penetration Pocket Tips

- Be sure to prime the penetration and the membrane inside the penetration pocket completely.
- Use tape around the top of the penetration pocket to keep the pourable sealer from flowing over the edges.
- Be sure that the pourable sealer mounds up in the middle of the penetration pocket to all water to shed away.
- Roller apply everything from inside, outward to avoid air bubbles.
- There should be at least a 1” spacing between all penetrations going through the penetration pocket.

