

The logo is set against a background of a globe with a red curved border at the top and bottom. The word "Firestone" is written in a large, red, stylized font with a slight shadow effect.

Firestone

BUILDING PRODUCTS



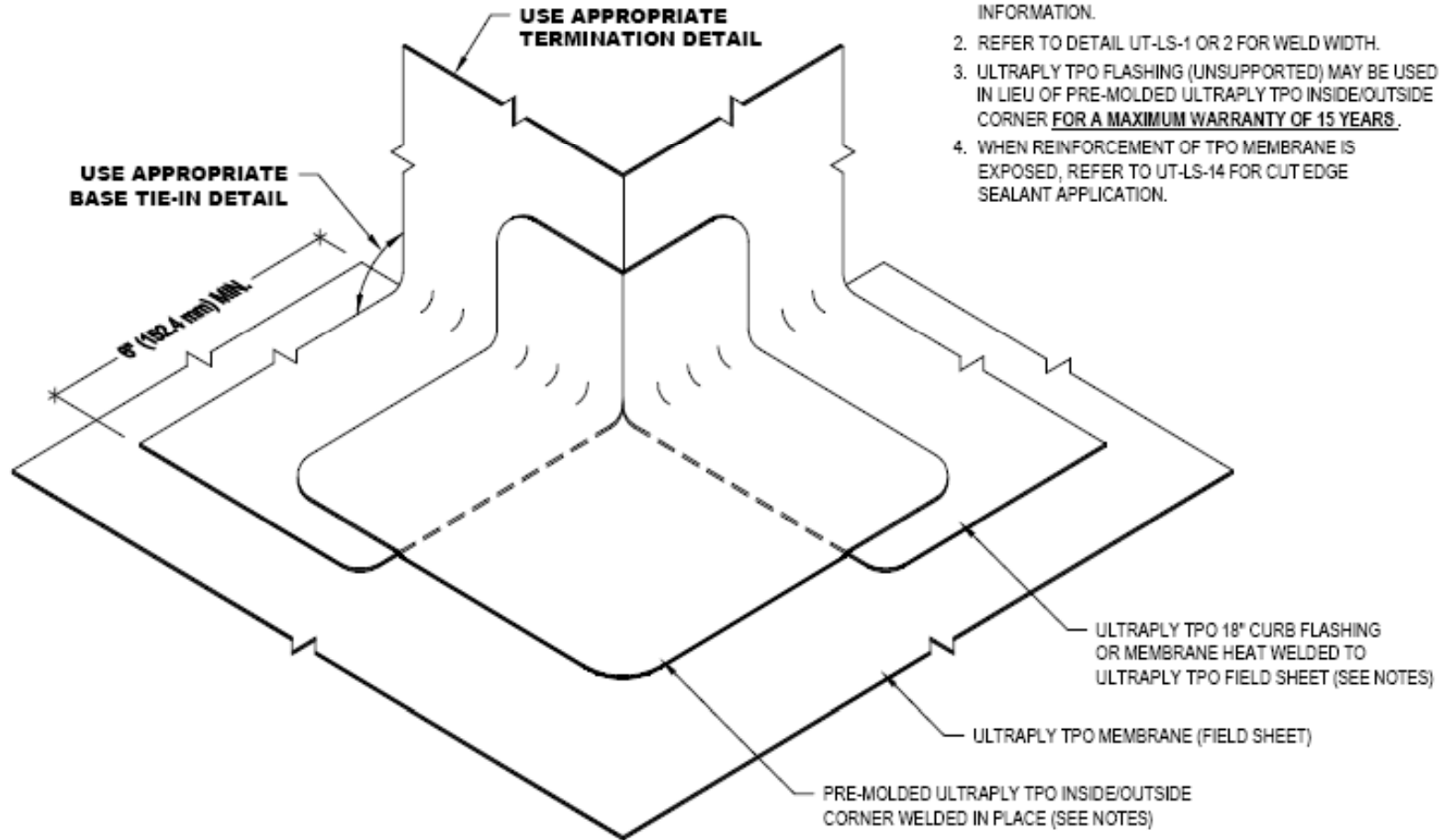
TPO

Corners

Firestone
BUILDING PRODUCTS



Installing an Outside Corner:



NOTES:

1. REFER TO FIRESTONE WEBSITE FOR MOST CURRENT INFORMATION.
2. REFER TO DETAIL UT-LS-1 OR 2 FOR WELD WIDTH.
3. ULTRAPLY TPO FLASHING (UNSUPPORTED) MAY BE USED IN LIEU OF PRE-MOLDED ULTRAPLY TPO INSIDE/OUTSIDE CORNER FOR A MAXIMUM WARRANTY OF 15 YEARS.
4. WHEN REINFORCEMENT OF TPO MEMBRANE IS EXPOSED, REFER TO UT-LS-14 FOR CUT EDGE SEALANT APPLICATION.

Firestone
BUILDING PRODUCTS
NOBODY COVERS YOU BETTER.™
www.firestonebpc.com

OUTSIDE CORNER

ULTRAPLY™ TPO

ACCEPTABLE SYSTEMS: ALL

MAXIMUM WARRANTY: **20 YEARS**

ISSUE / REVISION DATE:

1/1/2006

NOT TO SCALE

DETAIL NO.

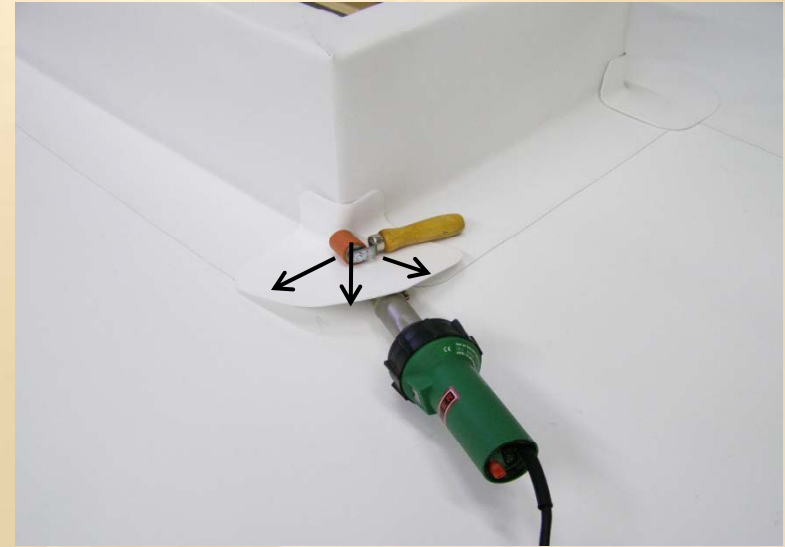
UT-C-1



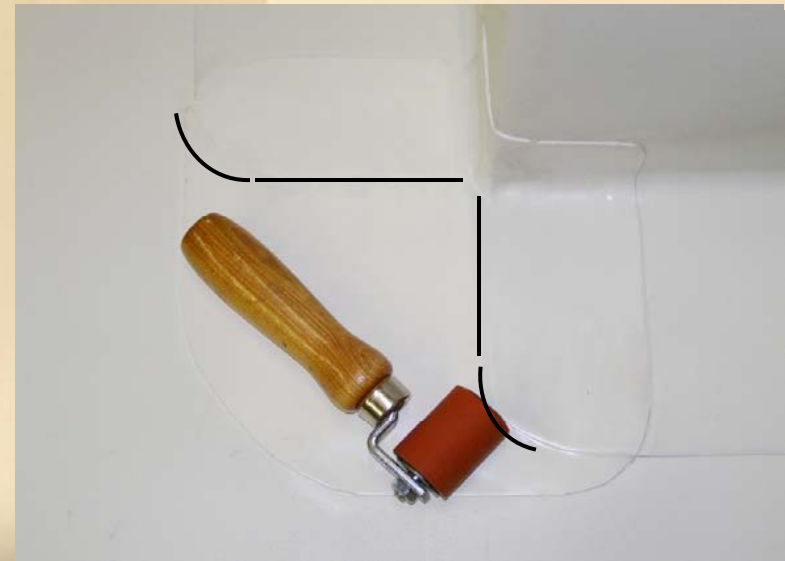
Outside Corner Steps:



Complete field and curb membrane attachment.



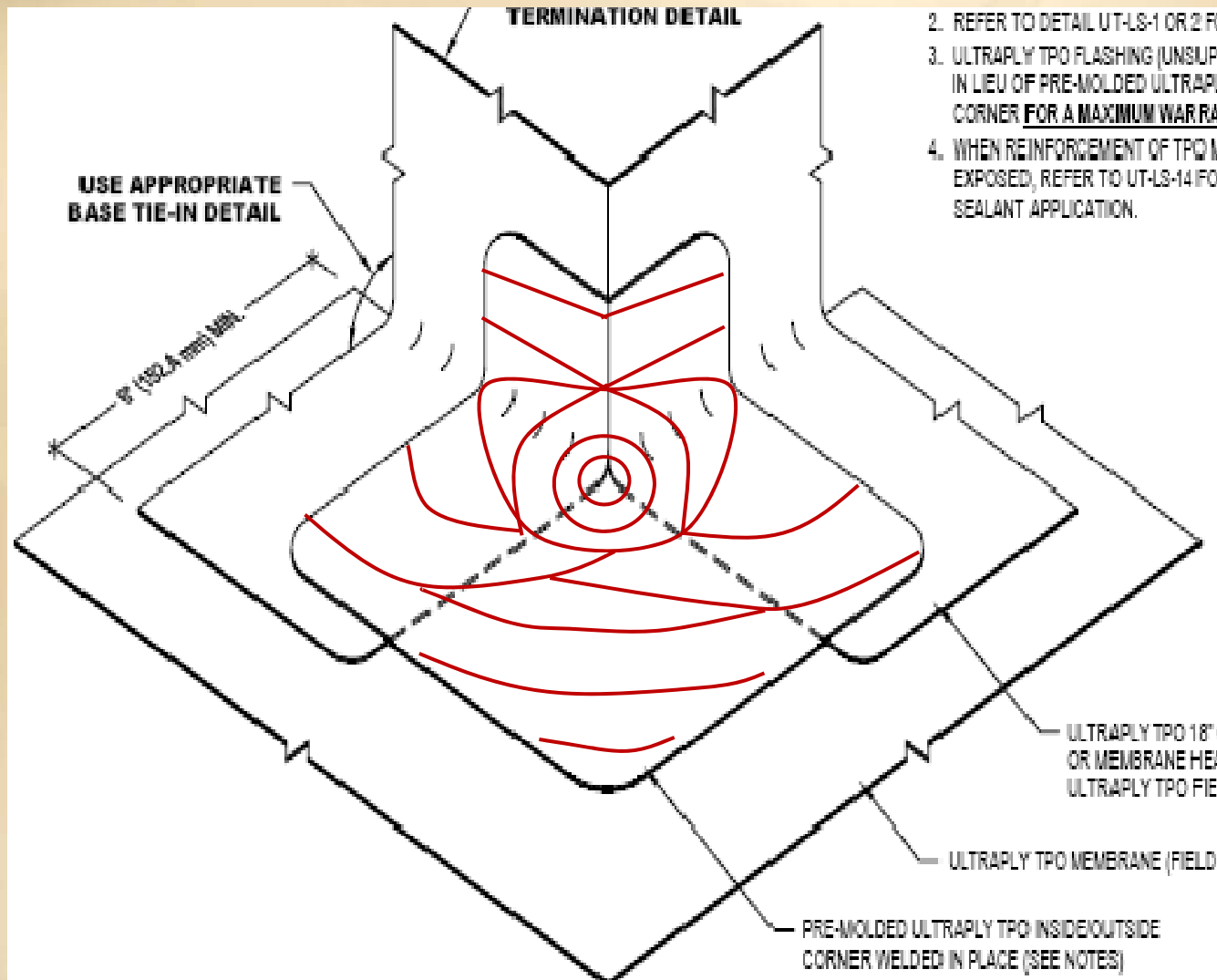
Start welding with pre-molded corner against the curb and work out onto the field sheet.



Place welder tip into vertical and work your way out. **Be sure to roll the edges of the curb wrap and flashing.**

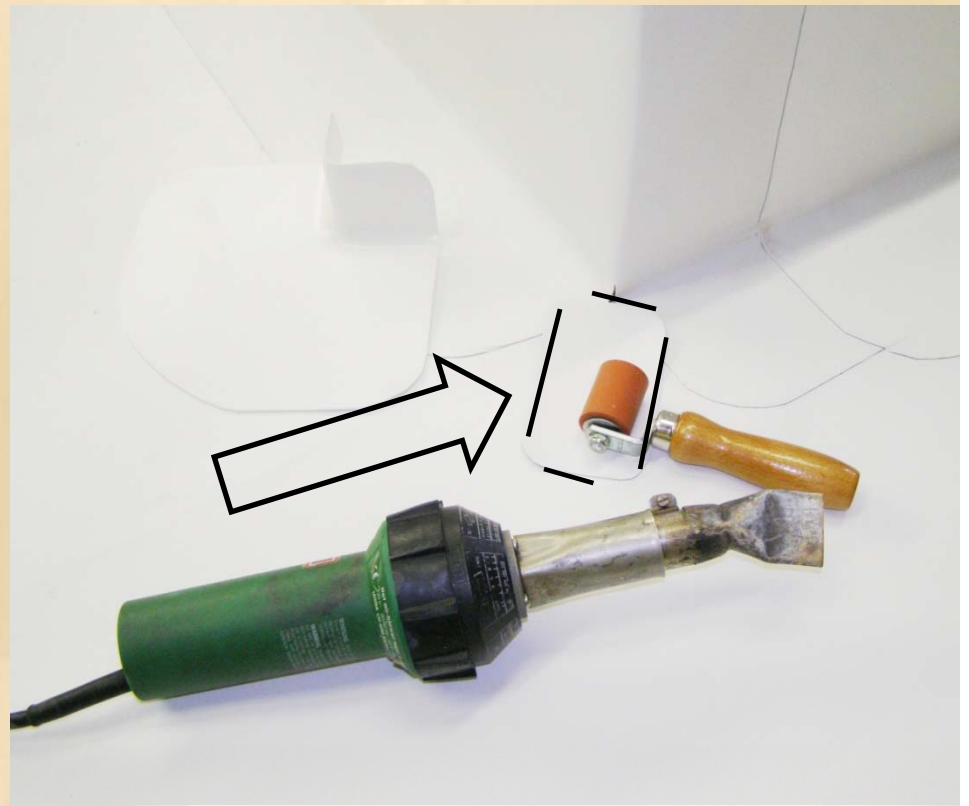
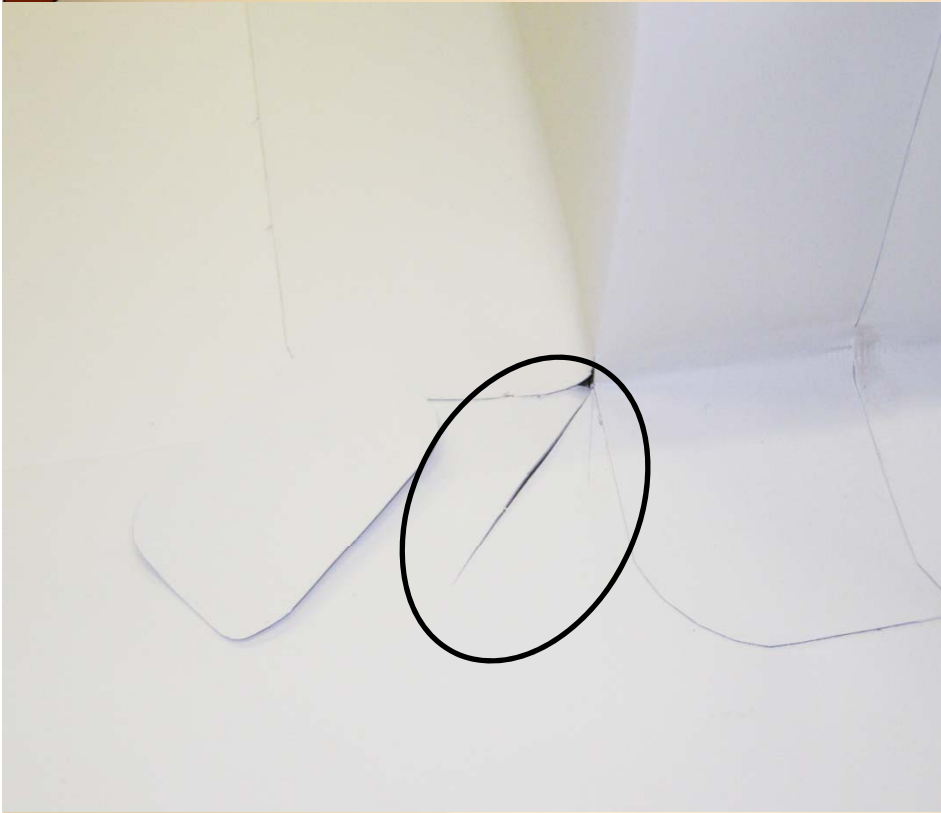


Welding Focus





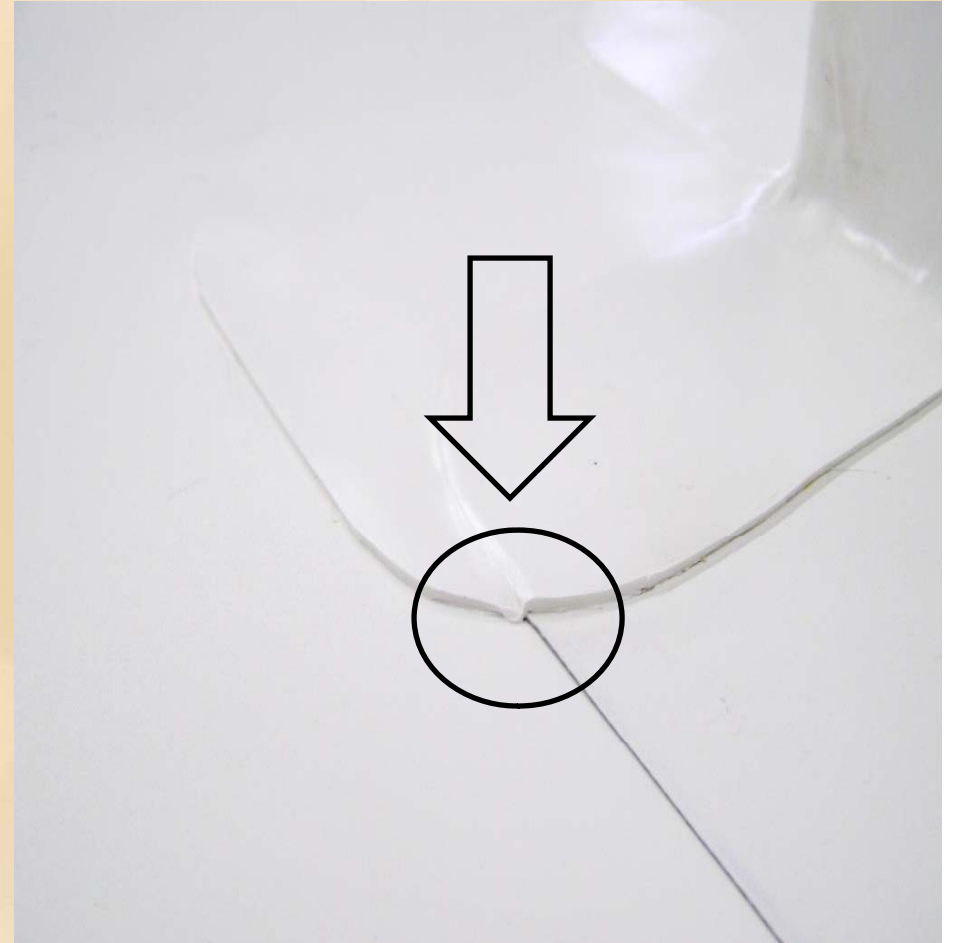
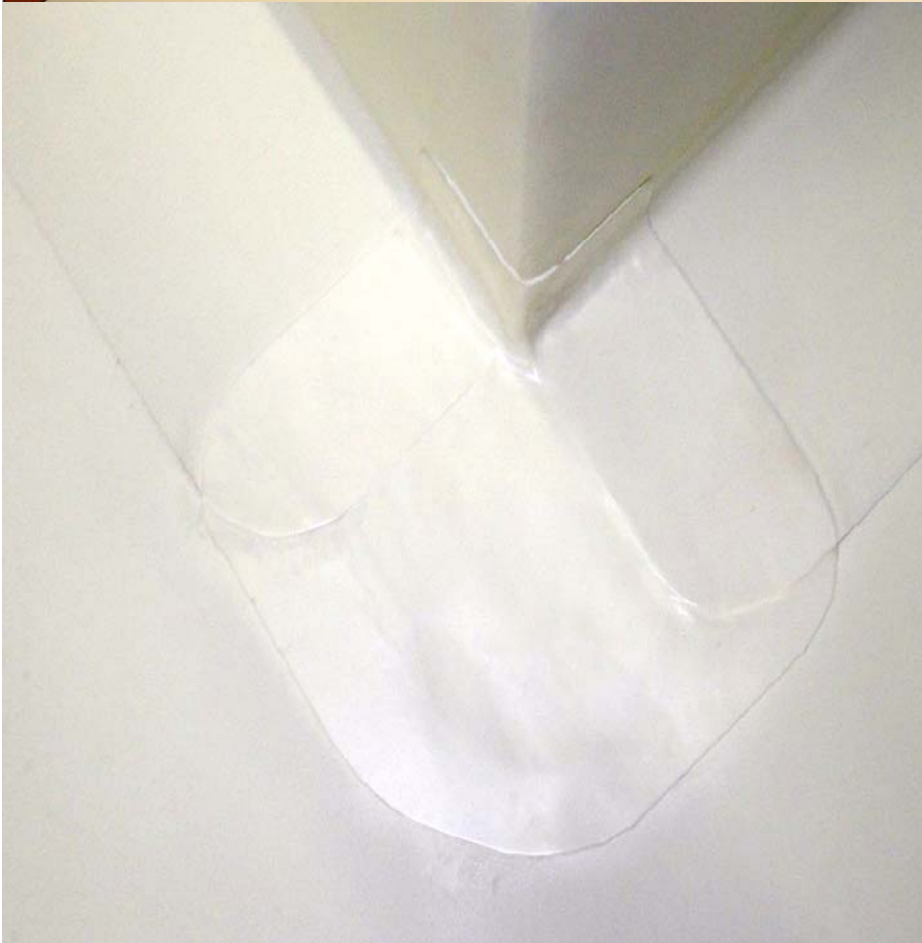
Something to look for...



If the corner cut in the field around the curb extends more than 1" into the field, a patch of TPO membrane is required and then apply the outside corner flashing.



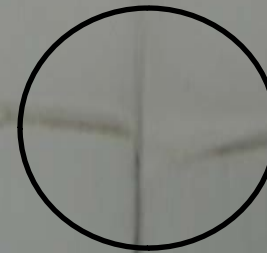
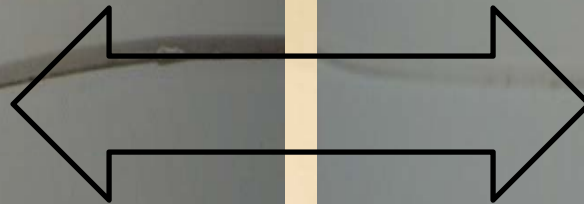
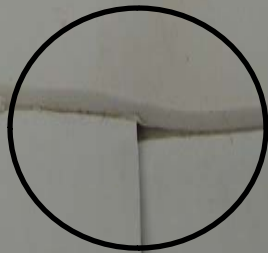
Completed Outside Corner



The detail is complete once the corner is installed in accordance with current Firestone details and passes a probing test.



Things to look for





Right or Wrong?





Right or Wrong?





Right or Wrong?





Installing an Inside Corner:

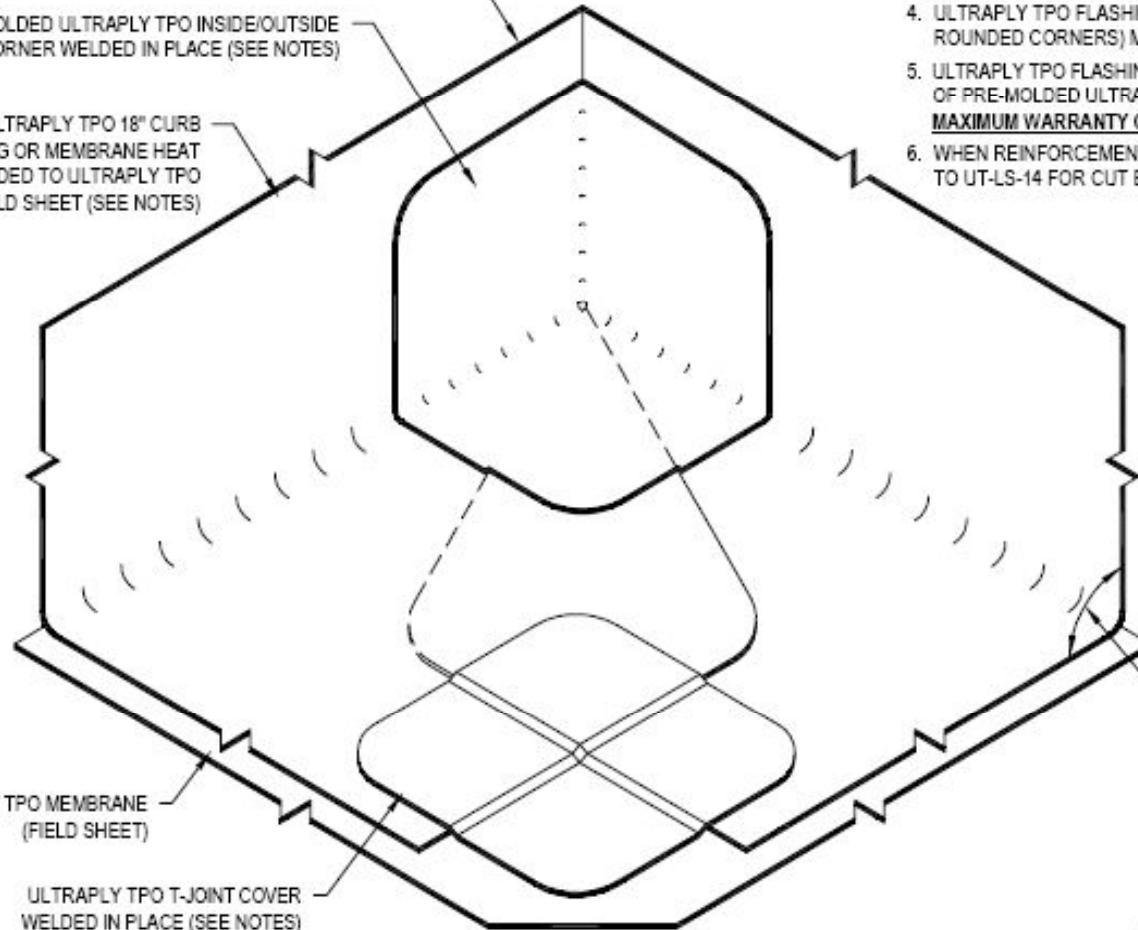
USE APPROPRIATE TERMINATION DETAIL

PRE-MOLDED ULTRAPLY TPO INSIDE/OUTSIDE CORNER WELDED IN PLACE (SEE NOTES)

ULTRAPLY TPO 18" CURB FLASHING OR MEMBRANE HEAT WELDED TO ULTRAPLY TPO FIELD SHEET (SEE NOTES)

ULTRAPLY TPO MEMBRANE (FIELD SHEET)

ULTRAPLY TPO T-JOINT COVER WELDED IN PLACE (SEE NOTES)



USE APPROP. BASE TIE-IN DETAIL

NOTES:

1. REFER TO FIRESTONE WEBSITE FOR MOST CURRENT INFORMATION.
2. REFER TO DETAIL UT-LS-1 OR 2 FOR WELD WIDTH.
3. T-JOINT COVER REQUIRED FOR .060 GAUGE MEMBRANE ONLY.
4. ULTRAPLY TPO FLASHING (UNSUPPORTED) (4"x4" MIN. WITH ROUNDED CORNERS) MAY BE USED IN LIEU OF T-JOINT COVER.
5. ULTRAPLY TPO FLASHING (UNSUPPORTED) MAY BE USED IN LIEU OF PRE-MOLDED ULTRAPLY TPO INSIDE/OUTSIDE CORNER FOR A MAXIMUM WARRANTY OF 15 YEARS.
6. WHEN REINFORCEMENT OF TPO MEMBRANE IS EXPOSED, REFER TO UT-LS-14 FOR CUT EDGE SEALANT APPLICATION.

Firestone
 BUILDING PRODUCTS
 NOBODY COVERS YOU BETTER.™
 www.firestonebpco.com

INSIDE CORNER WITH CONTINUOUS WALL FLASHING

ULTRAPLY™ TPO

ACCEPTABLE SYSTEMS: ALL

MAXIMUM WARRANTY: **20 YEARS**

ISSUE / REVISION
DATE:
1/1/2006

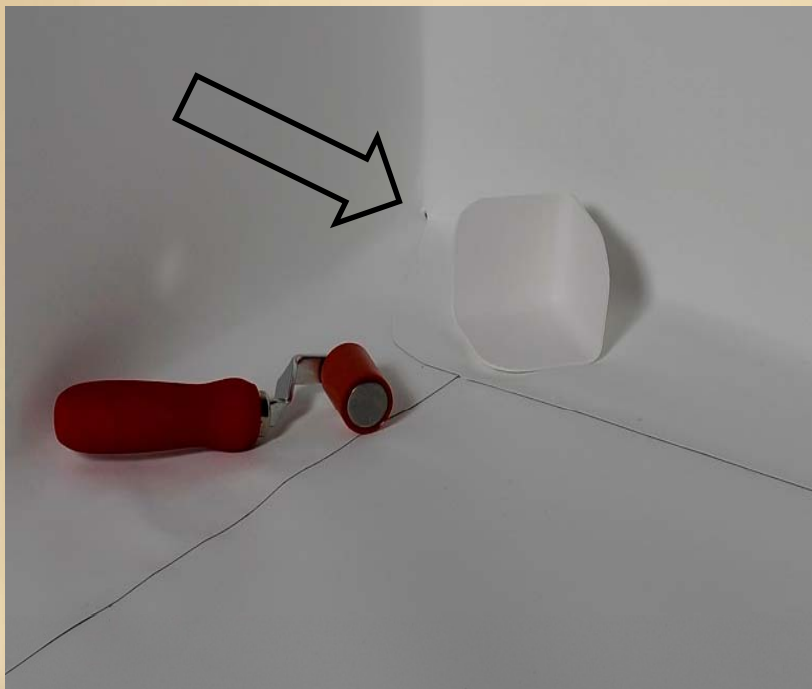
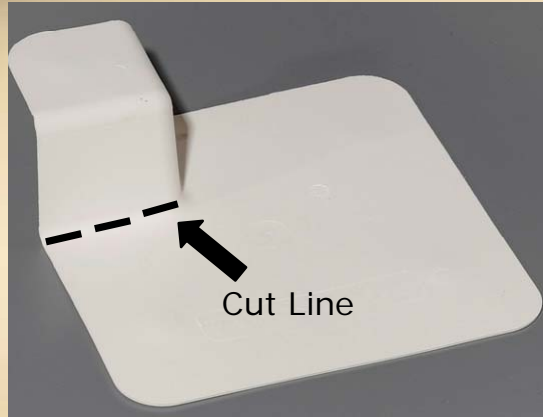
NOT TO SCALE

DETAIL NO.

UT-C-4



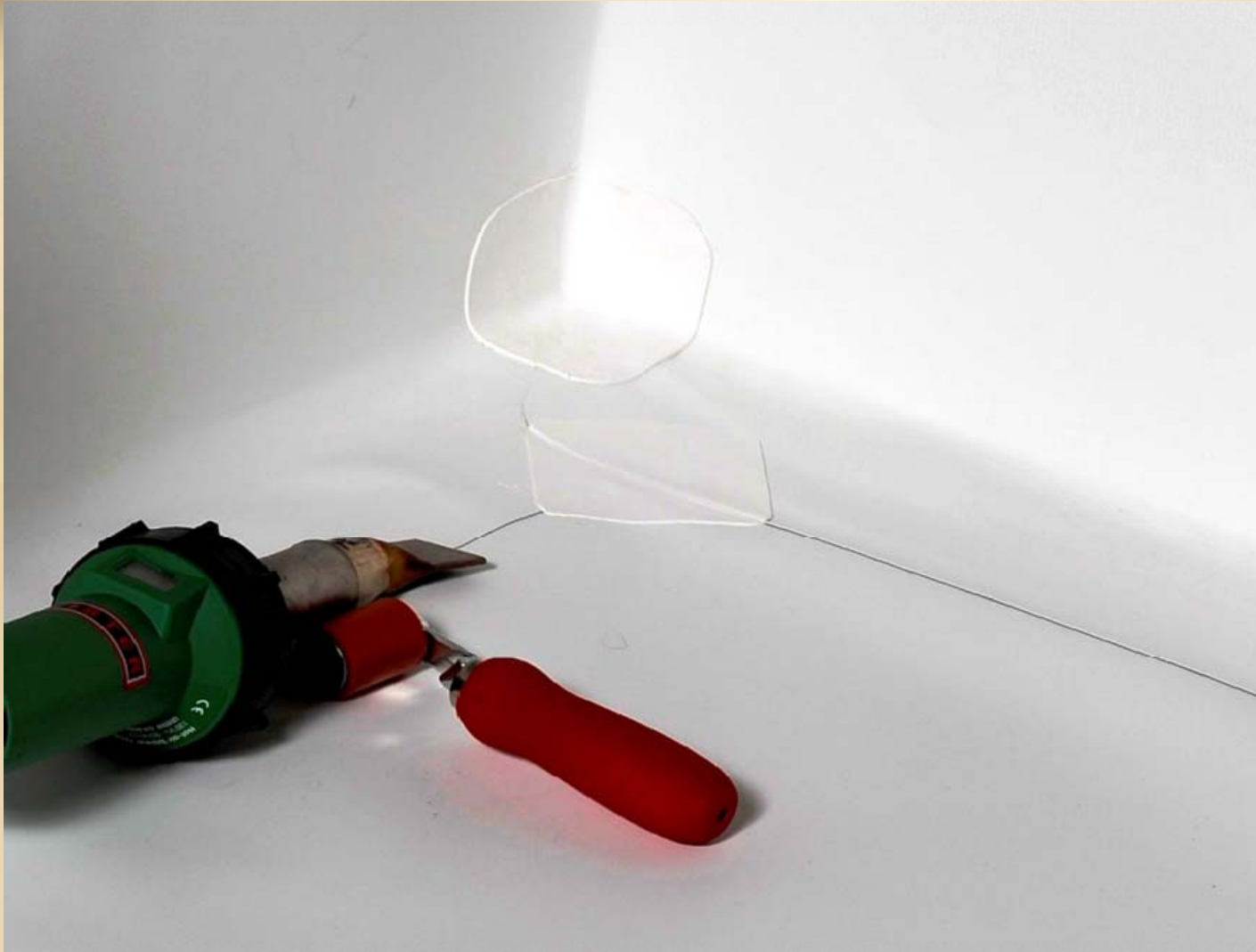
Inside Corner Steps



Place pre-molded inside corner into corner, being sure to cover the pinhole, and weld from the center out. Make sure to roll the corner properly and avoid over heating the corner.



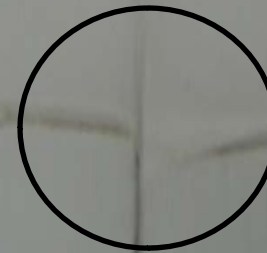
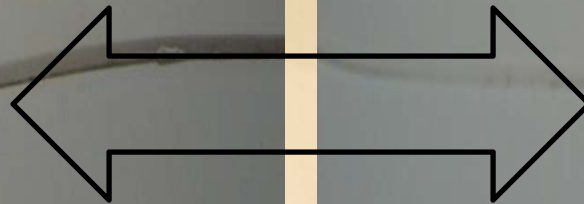
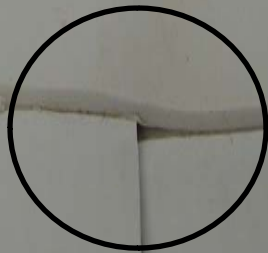
Installing an Outside Corner:



The detail is complete once the corner and T-patch are installed in accordance with current Firestone details and passes a probing test.



Things to look for





Right or Wrong?





Right or Wrong?

