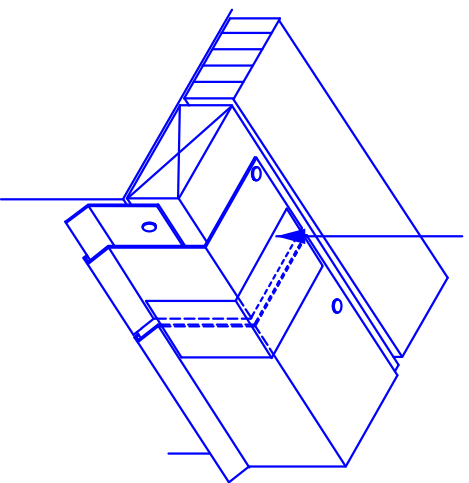
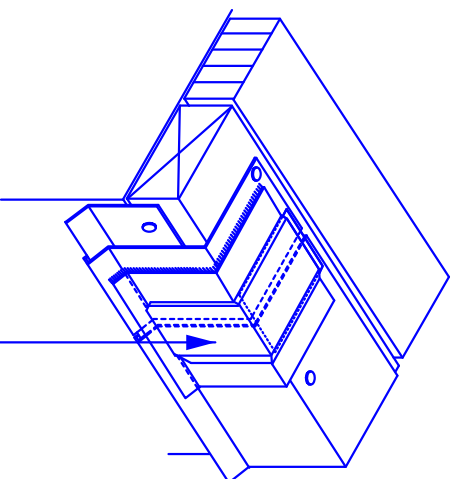


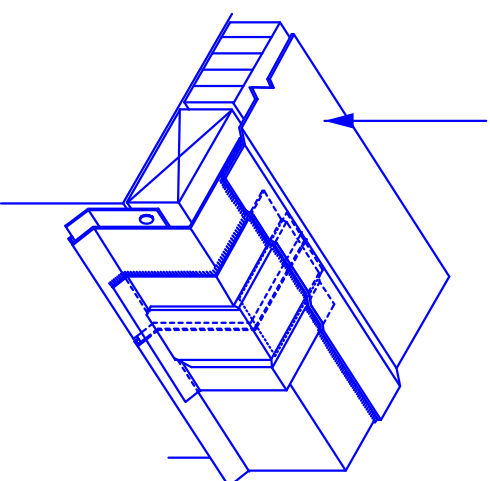
After installing TPO coated metal gravel stop, apply a 3" (76 mm) wide strip of masking or duct tape, centered over the metal joint. The tape must extend to within 1" (25 mm) of the bottom of the fascia. It acts as a separator to prevent normal thermal movement from affecting the watertight hot air weld to the coated metal.



Hot air weld the field sheet to the TPO coated metal and metal joint covers, maintaining a 1 1/2" Min. (38 mm) wide weld. Once completed, probe all welds, and repair any voids. Apply TPO edge sealant to any cut membrane edge to seal the scrim.



Hot air weld a 6" (152 mm) wide strip of reinforced TPO, centered over the metal joint and extending to both edges of the gravel stop metal.



TPO Coated Metal Gravel Stop

EZ TPO Systems

ACCEPTABLE SYSTEMS:
TPO Systems

MAXIMUM WARRANTY: 20 Years

ISSUE / REVISION
DATE:

10-27-2015

DETAIL NO.

EZ-14.11

NOT TO SCALE