

EPDM

Single-Ply Roofing Systems

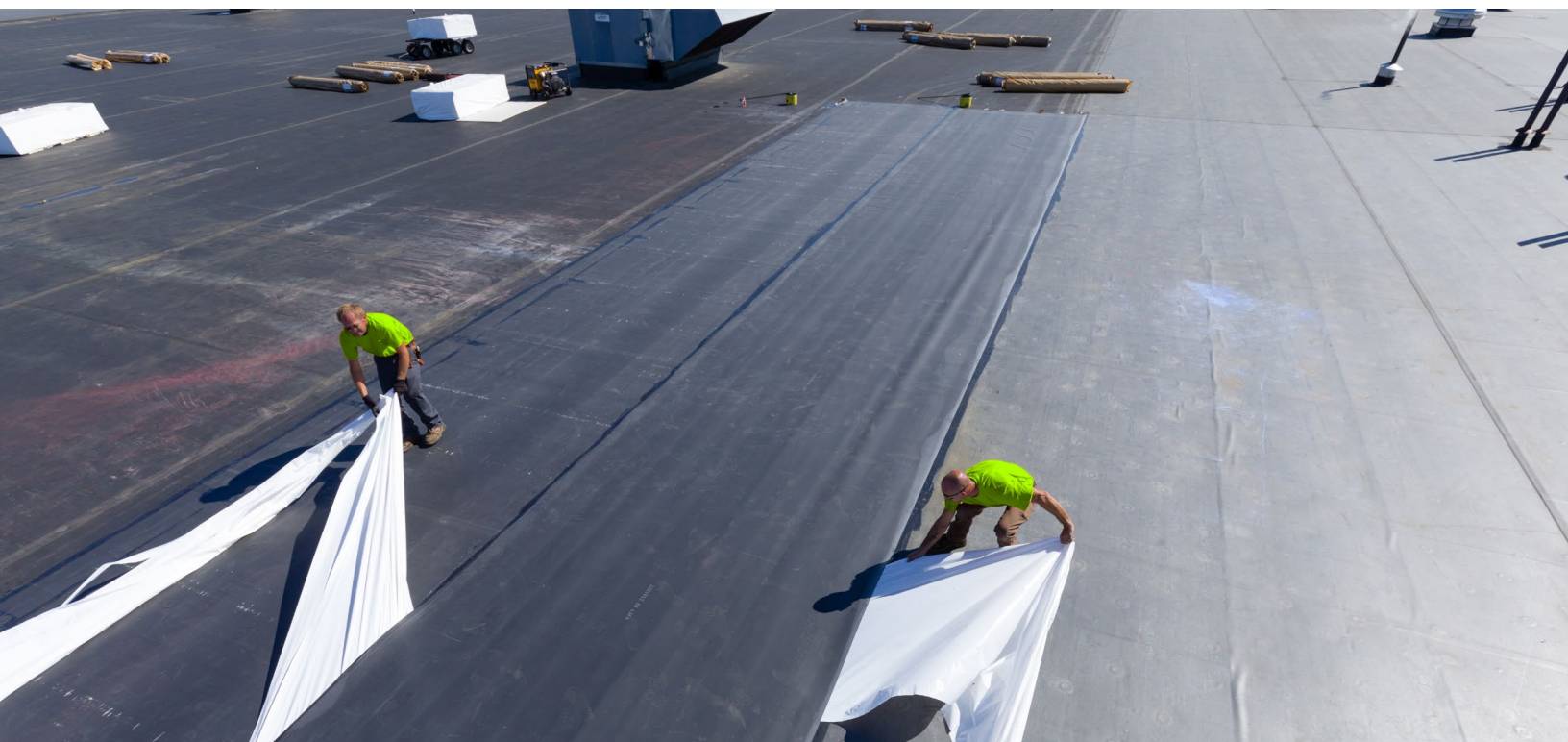
 GENFLEX™



WHEN IT COMES TO ROOFING, WE'RE ON A ROLL

Take a look at how GenFlex™ EPDM can meet your needs. This high-performance single-ply membrane is designed to withstand challenges, including tears, impacts, punctures, and day-to-day roof traffic. It provides long-lasting durability with excellent resistance to ozone and ultraviolet light exposure. You can count on its elasticity and flexibility to ensure reliable performance over time.

When it comes to standards, GenFlex EPDM meets all the requirements of ASTM Standard D4637, making it a versatile and dependable option for your roofing projects. So, let's roll forward with confidence and get your project underway!



ROOFING CHALLENGES DON'T HAVE TO BE OVER YOUR HEAD

At GenFlex, we're here to help you tackle and solve the toughest roofing challenges. Our line of proven, durable roofing systems and components are designed to provide you with the quality, ease of installation, and peace of mind you deserve. It's that simple.

By listening to your needs and delivering innovative solutions, we've stayed at the forefront of roofing products and technologies for over 40 years. And we're just getting started—because your success is what drives us forward.

EPDM MEMBRANES

GenFlex EPDM systems have a performance history of over 20 years and can be warranted for up to 20 years depending on the system design. Our EPDM meets all the requirements of the EPDM ASTM Standard D4637, making it a solid and versatile choice for your roofing applications. Benefits include:

- ▼ Over 40 years of installed system performance
- ▼ Superior weathering and ozone resistance
- ▼ System choices to fit specific projects
- ▼ Options to meet a variety of budgets

GENFLEX™ AFR EPDM

- ▼ **Installation methods:** Adhered, mechanically attached and ballasted
- ▼ **Thickness:** 45 mil (1.14 mm), 60 mil (1.52 mm) and 90 mil (2.28 mm)
- ▼ **Standard widths:** 10' – 20' (3 m – 6.1 m)
- ▼ **Standard length:** 100' (30.5 m)
- ▼ Available with factory installed seam tape.

GENFLEX™ FRM EPDM

- ▼ **Installation methods:** Adhered, mechanically attached and ballasted
- ▼ **Thickness:** 45 mil (1.14 mm), 60 mil (1.52 mm) and 75 mil (1.91 mm)
- ▼ **Standard widths:** 10' (3 m)
- ▼ **Standard length:** 100' (30.5 m)

GENFLEX™ EZ EPDM Peel & Stick™ Membrane

GenFlex™ EPDM Peel & Stick™ Membrane with pre-applied self-adhered Secure Bond™ Technology. Helps reduce labor and installation time.

- ▼ **Thickness:** 60 mil (1.52 mm)
- ▼ **Standard width:** 10' (3 m)
- ▼ **Standard length:** 100' (30.5 m)

EPDM ACCESSORIES

SYSTEM ACCESSORIES

1] Peel & Stick™ Seam Tape

- ▼ Two-sided, cured butyl seam tape (Black)
- ▼ One-step clean-and-prime application with scrub pad and handle
- ▼ Excellent adhesion designed for seaming EPDM membrane panels
- ▼ 3" (76.2 mm) and 6" (152.4 mm) widths in 100' length (30.5 m)

2] Peel & Stick™ Pipe Boots

- ▼ Injection-molded EPDM boot with pre-applied butyl tape
- ▼ Fits various round penetrations from 1" – 6" (25.4 mm – 152.4 mm) openings
- ▼ Engineered design eliminates the need for field-fabricated pipe flashings

3] Peel & Stick™ Cover Tape

- ▼ 6" (152.4 mm) wide semi-cured EPDM / butyl tape laminate
- ▼ Used to strip in metal battens and edge metal

4] Peel & Stick™ Corner Flashing

- ▼ 8 1/2" (215.9 mm) diameter uncured EPDM laminated to a butyl-based tape
- ▼ Uncured EPDM is designed to flash inside and outside corners
- ▼ Perforated release liner designed to help two-step application

5] Peel & Stick™ T-Joint Covers

- ▼ 8" x 10" (203 mm x 254 mm) uncured EPDM laminated to a butyl-based tape
- ▼ Increased tape thickness in the center of the cover
- ▼ Designed to cover T-joints or multiple layers where cured membrane intersects

6] Peel & Stick™ Walkway Pad

- ▼ High-quality rubber pads with factory-laminated seam tape
- ▼ Thick rubber pad is designed to protect the membrane from damage
- ▼ 30" x 30" (762 mm x 762 mm) size is convenient for handling and installation

7] GenPrime

- ▼ High-solids primer with excellent tack-back qualities
- ▼ For use with all Peel & Stick™ EPDM flashing products
- ▼ Installation with GenFlex™ scrub pads and handles

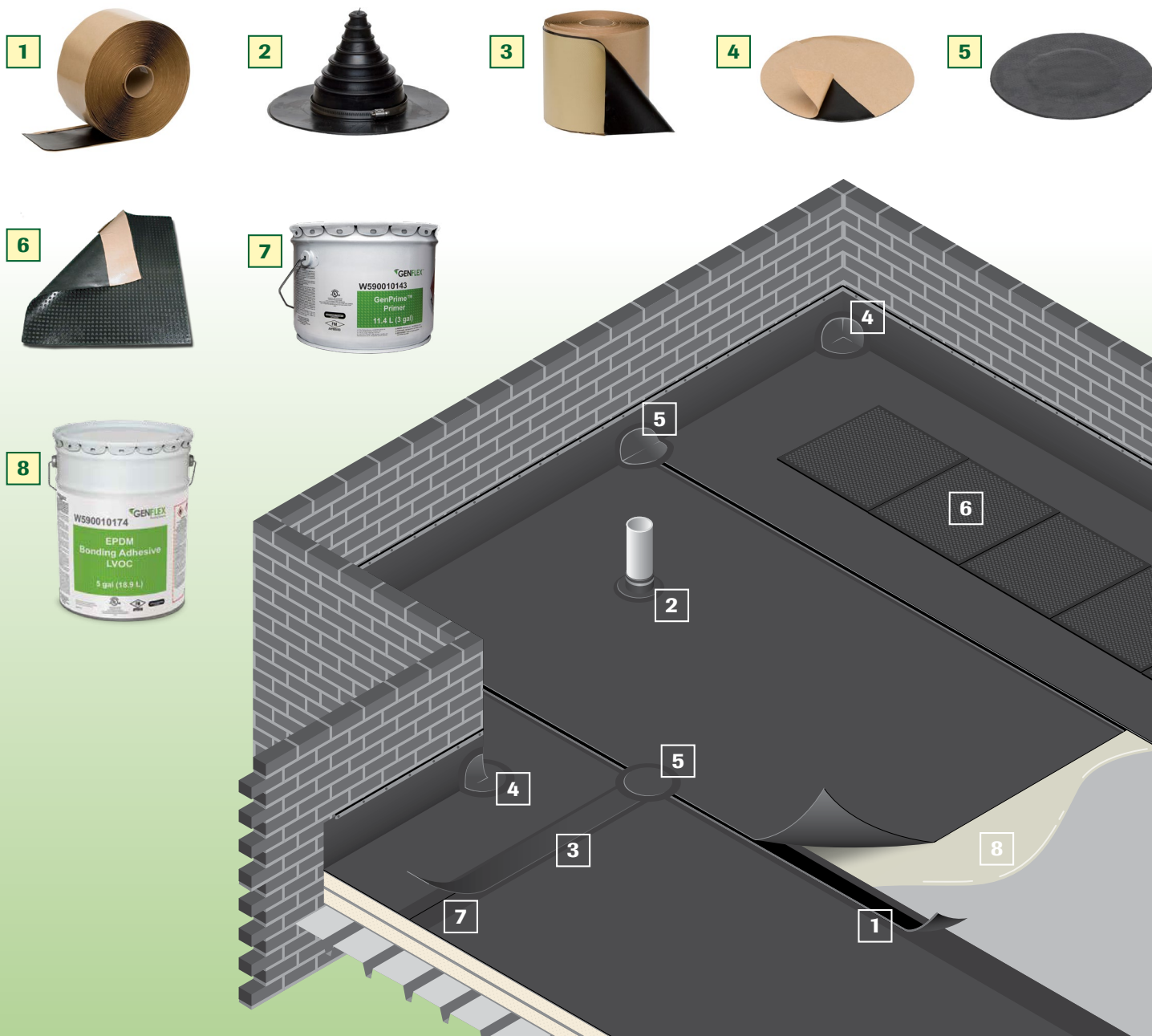
8] LVOC Options

- ▼ Full line of LVOC and OTC compliant adhesives and primers
- ▼ Available in contractor-friendly pails
- ▼ Scrub Pad and Handles
 - Abrasive pads and molded plastic handles
 - One-step clean-and-prime application
 - Designed to apply primer to EPDM membranes

FASTENERS AND ACCESSORIES

No roofing system is complete without proper securement and accessories. That's why GenFlex™ offers a complete line of fasteners and accessories for EPDM systems to make sure your roofing system isn't missing a thing.

For information on these products and more, visit www.GenFlex.com.



PEEL & STICK™ FEATURES AND BENEFITS

Strength

- ▼ High-performance butyl-based tape
- ▼ Proven performance for over 20 years
- ▼ Strong, water-resistant seams
- ▼ Excellent tolerance of temperature extremes
- ▼ High resistance to UV and ozone exposure

Speed

- ▼ No waiting for adhesives to dry
- ▼ Primer applied in a one-step installation process with GenFlex™ scrub pads and handles

Simplicity

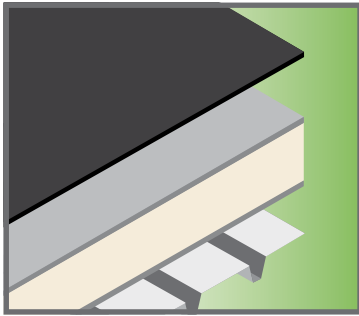
- ▼ Less edge caulking
- ▼ No liquid adhesives
- ▼ Little cleanup
- ▼ Limited equipment needs
- ▼ Fewer VOCs than liquid seam adhesives

Savings

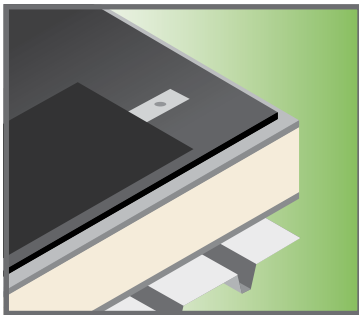
- ▼ Minimal material waste
- ▼ Less labor and fewer products

OPTIONS FOR INSTALLATION

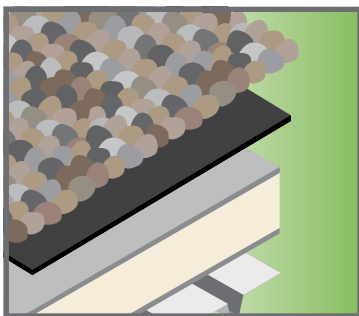
Suitable for new construction or re-roofing jobs, GenFlex™ EPDM membranes can be installed self-adhered, adhered, mechanically attached or ballasted.



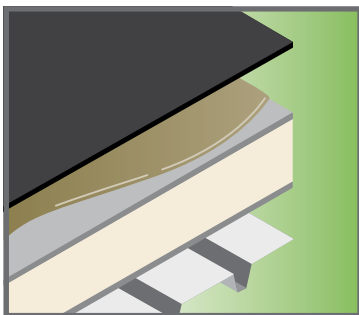
Self-Adhered Systems are easy to install, help reduce labor costs and improve worksite air quality. The factory applied pressure-sensitive Secure Bond™ Technology adhesive eliminates field application of bonding adhesives.



Mechanically Attached Bar Anchor Systems provide exceptional strength and integrity on applications with large, open roof areas. These systems include Battered-Seam (IMAGE AT LEFT) and Batten Cover Tape (NOT SHOWN) systems.



Ballasted Systems are perfect for installations where speed and economy are prime considerations, and the substrate is capable of supporting the system's dead load. Slope must not exceed 2" (50.8 mm). Insulation and membrane are loose-laid with the membrane fastened only at the perimeter. Recommended ballast is smooth, water-worn rocks.



Adhered Systems are ideal for roofs with unusual or odd-shaped contours, or where mechanical penetration of the membrane is not desirable, while providing exceptional wind performance and longevity. Once positioned over the substrate, the back of the membrane and the substrate are coated with GenFlex™ membrane adhesives, allow to flash off, and carefully rolled back into position then broomed into place.

GENFLEX™ EPDM TEST DATA

ASTM D4637	Type 1 – Non-reinforced EPDM			Type 2 – Scrim-Reinforced EPDM		
Property	ASTM Test Method	ASTM Minimum	Typical AFR Values	ASTM Test Method	ASTM Minimum	Typical FRM Values
Weight: lbf/ft ² (kg/m ²) 45 mil (1.14 mm) 60 mil (1.52 mm) 75 mil (1.91 mm)	D792	--	0.29 lbf/ft ² (1.4 kg/m ²) 0.39 lbf/ft ² (1.9 kg/m ²)	D751	--	0.32 lbf/ft ² (1.6 kg/m ²) 0.42 lbf/ft ² (2.1 kg/m ²) 0.55 lbf/ft ² (2.7 kg/m ²)
Nominal Thickness: inches (mm)	D4637	.040 (1.016) .054 (1.37)	.045 (1.14) .060 (1.52)	D751	.040 (1.016) .054 (1.37)	.045 (1.14) .060 (1.52)
Thickness Over Scrim: inches (mm)				Optical	.015 (0.381)	.015 (0.381)
Breaking Strength: lbf (N)				D751	90 (400)	240 (1068)
Tensile Strength: (psi) MPa	D412 (Die C)	1305 (9.0)	1425 (9.8)		--	--
Dynamic Puncture Resistance	D5635	Pass	Pass	D5635	Pass	Pass
Static Puncture Resistance	D5602	Pass	Pass	Pass	Pass	Pass
Elongation: ultimate %	D412 (Die C)	300	450	D412 (Die C)	250	475
Elongation @ Fabric Break: ultimate % Machine Direction Cross Direction		--	--	D751	15 15	15 15
Tensile Set: max %	D412 (Die C)	10	10		--	--
Tear Resistance: lbf/in (kN/m)	D624 (Die C)	150 (26.27)	200 (35)		--	--
Brittleness Point: max °F (°C)	D2137	-49 (-45)	-63 (-53)	D2137	-49 (-45)	-65 (54)
Ozone Resistance: No Cracks	D1149	Pass	Pass	D1149	Pass	Pass
Heat Aging: 240°F (116°C) 28 days Breaking Strength: lbf (N) Tensile Strength: psi (MPa) Elongation: ultimate % Tear Resistance: lbf/in (kN/m) Linear Dimensional Change: max %	D573 D412 D412 D624 D1204	-- 1205 (8.3) 200 125 (21.9) ±1.0	-- 1415 (9.7) 290 181 (31.5) -0.7	D573 D751 D412 D1204	80 (356) -- 200* -- ±1.0	275 (1223) -- 300* -- -0.7
Water Absorption: max mass % 158°F (70°C) 7 days	D471	8 (-2)	+1.8	D471	8 (-2)*	+1.8*
Factory Seam Strength: lbf/in (kN/m)	D816	50 (8.8) sheet failure	50 (8.8) sheet failure	D816	50 (8.8) sheet failure	50 (8.8) sheet failure
Weather Resistance: Visual Inspection	D518	Pass	Pass	D518	Pass	Pass

* Specimen to be prepared from coating rubber compound, vulcanized in a similar method to the reinforced products.

NOTE: Comparisons based on independent agency testing. Results may vary.



www.GenFlex.com

© 2025 GenFlex™

WE DON'T JUST DELIVER MATERIALS, WE DELIVER SOLUTIONS THAT HELP OUR PARTNERS SUCCEED

At GenFlex, we believe success starts with partnership. By understanding your unique roofing challenges, we provide tailored solutions that ensure durability, ease of installation, and lasting performance. Our commitment to quality, innovation, and customer support means we're with you every step of the way—from selecting the right materials to providing comprehensive warranty coverage for peace of mind. Together, we turn challenges into opportunities, equipping you with the tools and expertise needed to deliver exceptional results on every project. At GenFlex, your success is our mission, and we're here to help you achieve it. **Questions?**

Email us at GenFlexSolutions@holcim.com

Code Compliance

Compliance is more than a requirement—it's our commitment to quality, safety, and innovation, helping make sure your project is built to last while meeting legal and environmental standards. With GenFlex, you can trust that your roofing system is designed to perform and comply at the highest level. GenFlex has systems that have achieved Underwriters Laboratories™ (UL) classifications and Factory Mutual (FM) approvals. GenFlex systems are also listed by International Code Council™ (ICC) and Miami Dade County. Refer to the appropriate agency publication for other listings, or contact the GenFlex Roofing Systems technical department at **1-800-443-4272**, 7:30 AM - 4:30 PM Central Time.